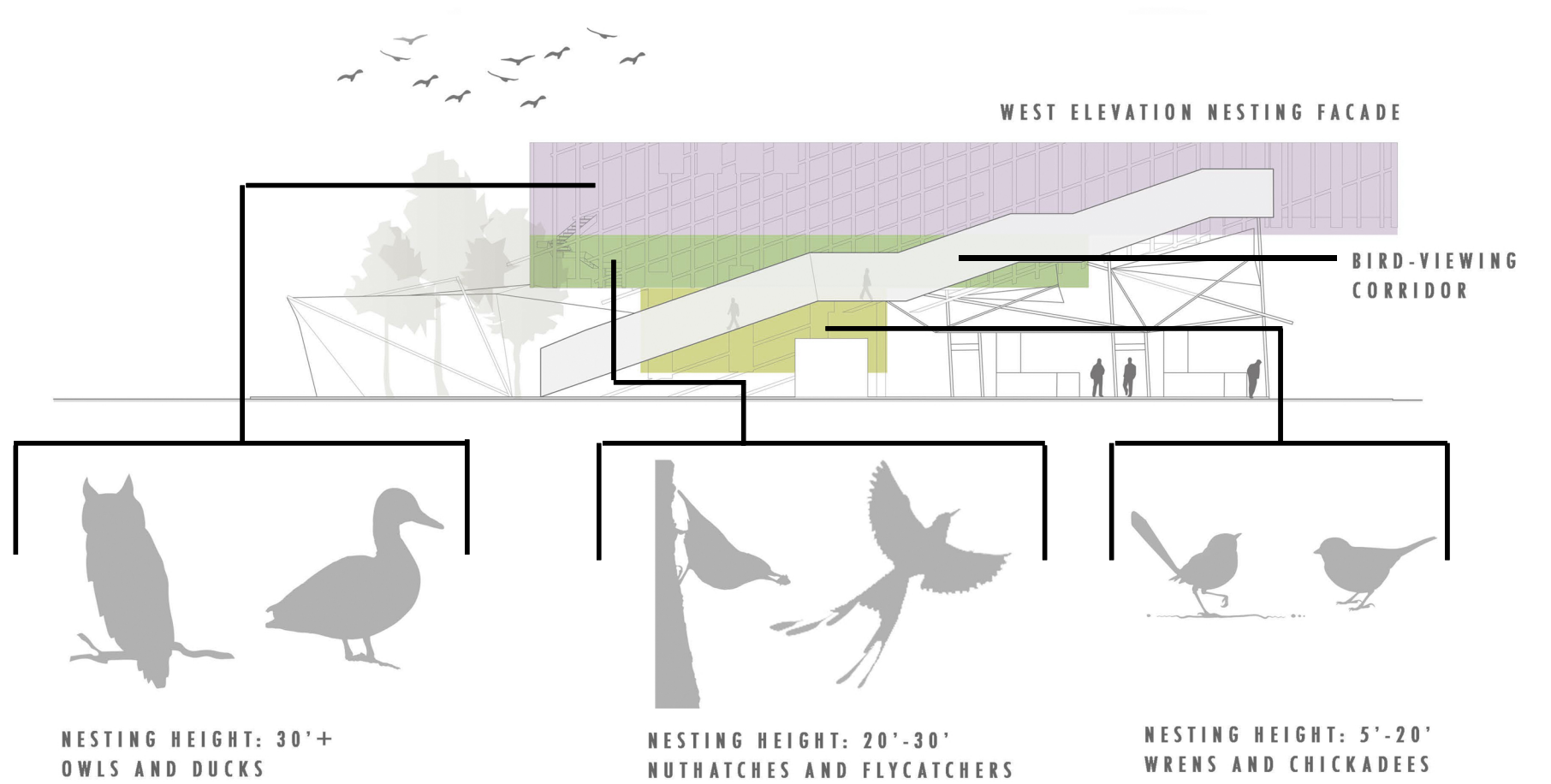
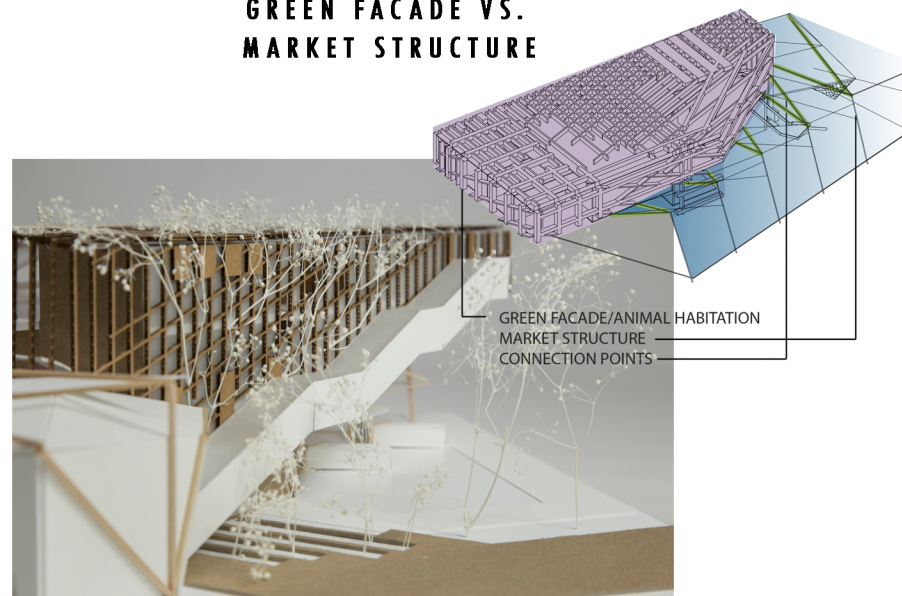


# NESTING FACADE: ECOLOGICAL MICROCOSM

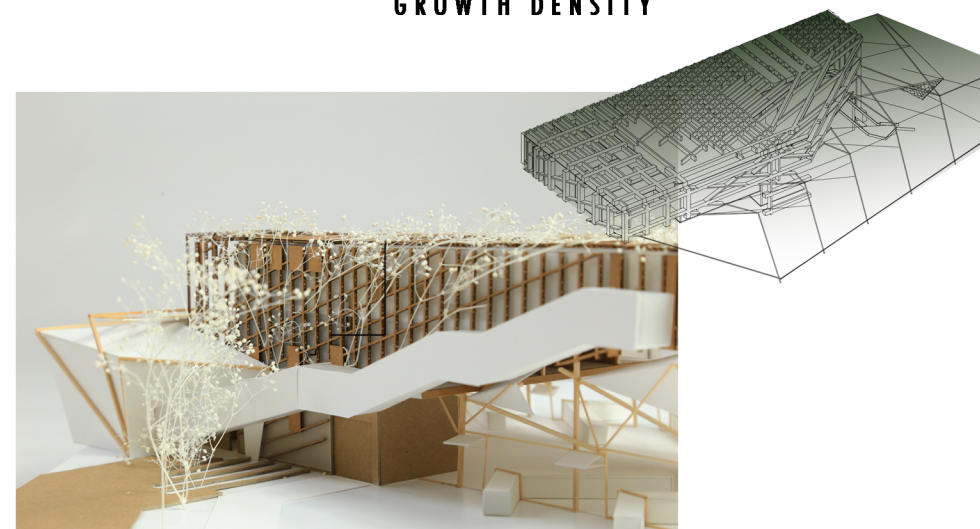
The facade that covers program elements like classrooms, offices, and a lecture hall is designed to be a facade for the various bird species that were displaced due to the culverting of the Doan Brook Watershed in the region. The form of the facade is derived from the various nesting datums of regional bird species, and also serves as a facade for plants and vines to grow on, bringing more animal species to the site. The bird corridor, which is a firestair that runs down the west facade, allows for human users of the space to see and understand the ecological effects that the building has in relation to the context.



## GREEN FACADE VS. MARKET STRUCTURE



## GREEN FACADE GROWTH DENSITY



## PROGRAM VS. FACADE FORM

