

SCHOOL OF VISUAL ARTS TOWER

SVA _ Looking for IDENTITY

Project (Design) | 2016

Site Area | 1.0 acres

Total Built Area | 148598 sft

Location | Community Block 6, Manhattan, NYC, USA

School of Visual Arts (SVA) is a for-profit art and design college located in Manhattan, New York, founded in 1947. The college is a member of the Association of Independent Colleges of Art and Design, a consortium of 36 leading art schools in the United States. It is a multidisciplinary college of art and design known for its unparalleled faculty and innovative curriculum, offering the BFA, MFA, MA, MAT and MPS degrees. The design of the SVA building poses A DILEMMA IN ARCHITECTURAL EXPRESSION between the spatial needs for the SVA people and the space planning requirements of a modern for-profit institution in the busiest city. Therefore the design starts with this issue without compromising THE FUNCTIONAL NEEDS OF A MODERN DAY INSTITUTION, AND THE SPIRIT OF SVA.

The design seeks URBAN NATURE, whose color is not just green but also grey. From the 1st avenue on East, the primary entrance plaza leads one to the main premise. In the front plaza area, a WATER GARDEN with local water plants has been introduced to ensure physical separation from the road and the passing crowd, also at a time to create a sense of connection to them with visual accessibility. After this, comes the SCULPTURE COURT, through which the visitors can pass towards the main building or can spend time with themselves or others, to admire the art pieces there. The water garden and the sculpture court together form the TRANSITION SPACE from the city life to the SVA premise, which holds the spirit and philosophical ground of SVA creating A PLATFORM FOR VISUAL ARTS and art lovers.

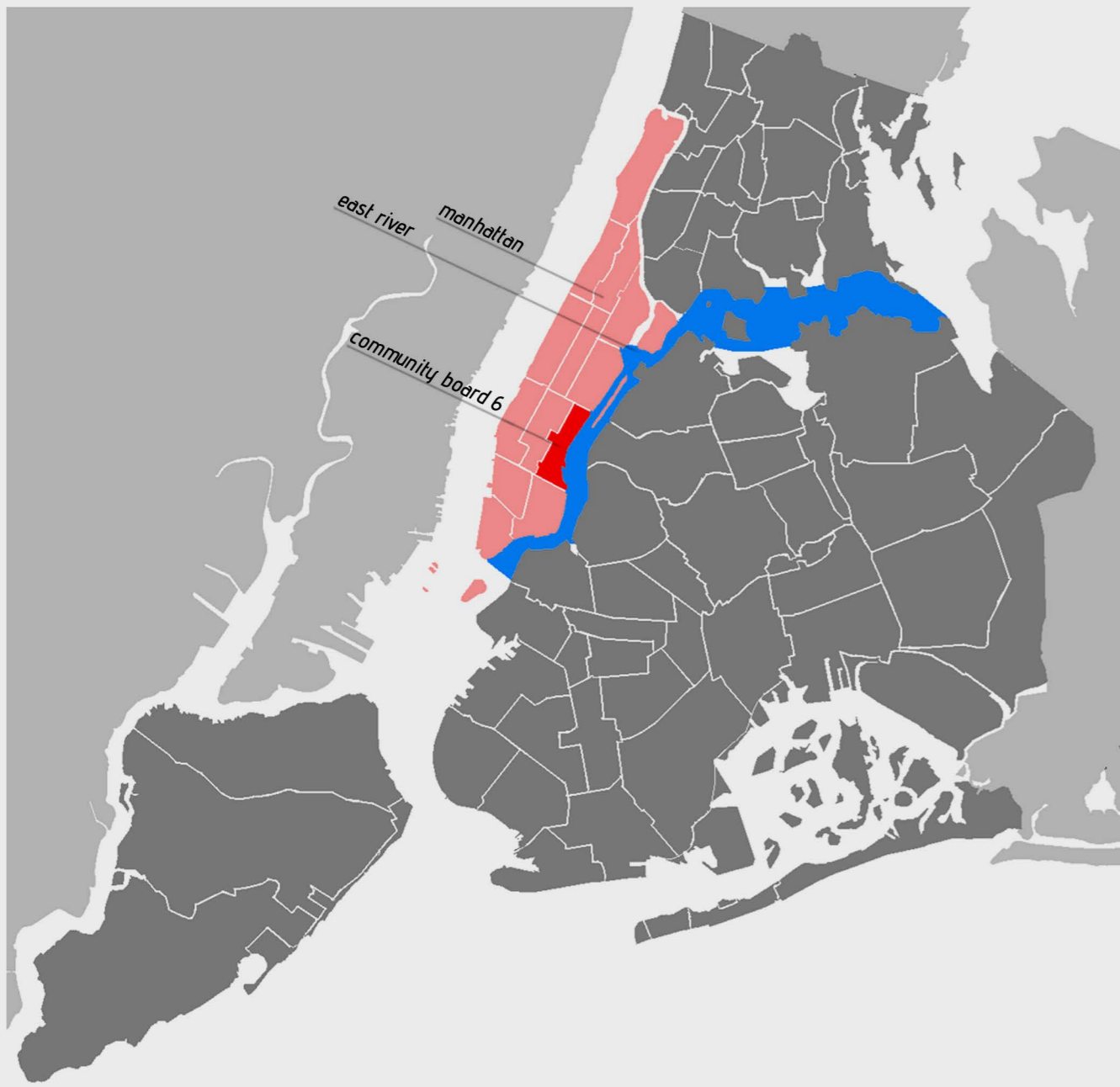
The ground level is a transparent block to allow VISUAL PERMEABILITY to all. It consists of lobby lounges and VISUAL ARTS DISPLAY areas for public. The two upper levels offer the academic spaces, accessible to public with permission only. The first academic levels consist of the administrative workspaces, seminar rooms, public spaces etc and a SCULPTURAL RAMP leads to the upper level from here. The second academic level has the visual arts studios- open and spacious, the faculty rooms etc. Here, we can see THE 'EGG' in the atrium above the ramp. This CONNECTS THE SPACE TO THE SKY and complements the elliptical ramp here and the circular stairway below in the public hall.

Then there is a level for common spaces for the residents here. It has COMMON WORK SPACES, BREAK OUT SPACES etc. The DORMITORY above forms a tower, accessible only to the SVA residents. Each level has either a COMMON WORKSPACE or a COMMON UTILITY/SHARING SPACE. These spaces are double height and visually connected to the upper level, to INSPIRE INTERACTION AND LATERAL LEARNING. The facades have space to keep your bicycle there to be accommodated in the corridor just outside your room. The bedrooms are designed such that the MOST ECONOMIC use can be ensured, allowing the SVA students the space to work. There is no partition inside, to ensure AMPLE LIGHTING AND MORE SPACE and the bedrooms are open on North and South only, to ensure the same. The basic accommodation has been worked out in a simple and optimum layout so that MAXIMUM UTILIZATION AND INCREASE IN COMMON SPACES can be ensured.

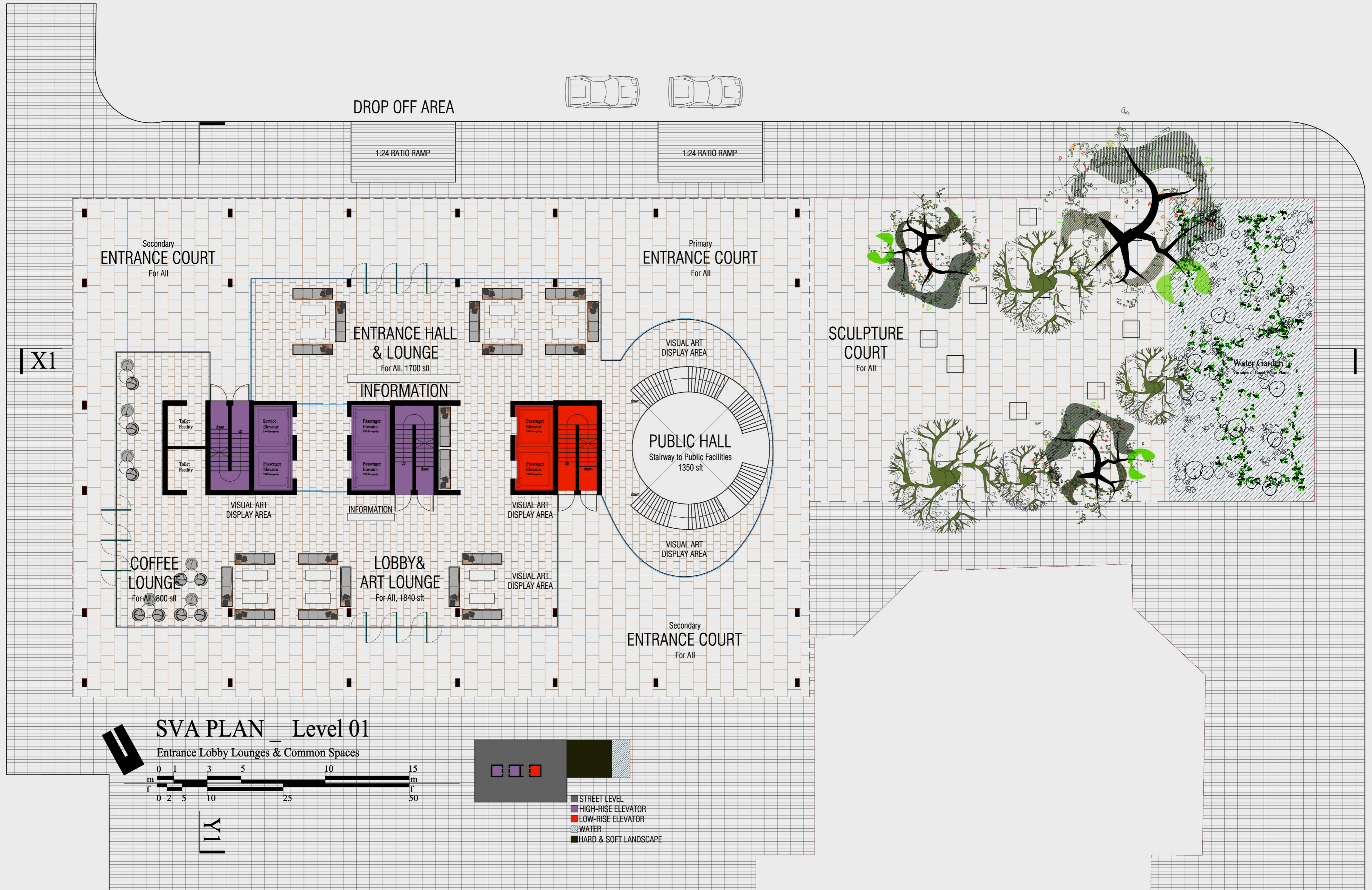
The design offers ONE TOWER BLOCK perfectly connected to the Public and Semi-public spaces below and also being a separate identity, WRAPPED WITH CRAFTED POROUS [not perforated] FRETTED GLASS SCREEN at all sides creating a SIMPLE MONOLITHIC IMAGE in the middle of the hustle and bustle of various building profiles that surround it. Contrasting the context, the image is immediately IMPRINTED ON ONE'S MIND. A number of URBAN APERTURES crawl up the tower to connect to the ground and the surroundings, which are designed with the picturesque panoramic view of surroundings. They also help the monolithic built form to breathe into the city.

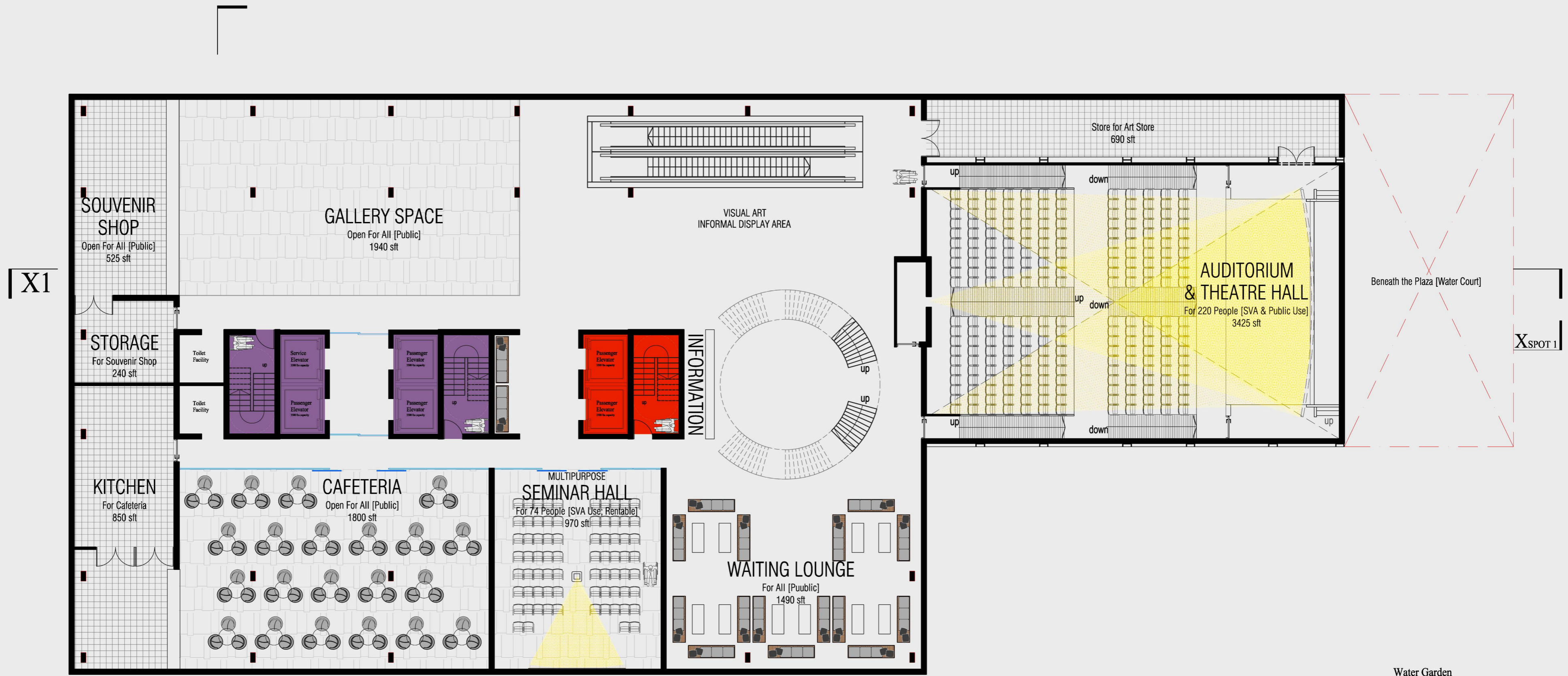
The cellar level has the auditorium and the seminar hall. These are to be used for both ACADEMIC AND COMMERCIAL PURPOSE and are subjected to be rented to public at specific schedule only. There are super shop, visual art gallery, cafeteria, laundry, salon, squash courts etc for SVA and public use. The rentable spaces can generate PROFIT FOR SVA and also ALLOW PEOPLE TO CONNECT TO THE SVA SPIRIT.

The design quested to achieve flexibility of adaptation through spatial relationships floating within and outside. The tower shows LIGHTNESS AND FRAGILITY in structure, while partially revealing its COMPLEXITY AND SPIRIT to both the passing spectators and distant viewers. The SVA Tower aims to become a NEW SYMBOL OF CULTURAL ENERGY for the SVA people and the city crowd as well.



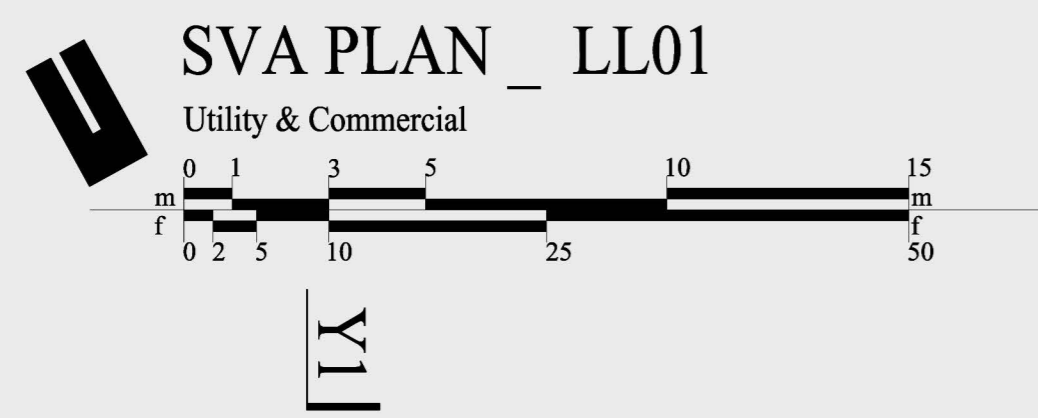
school of visual arts : site context and road network

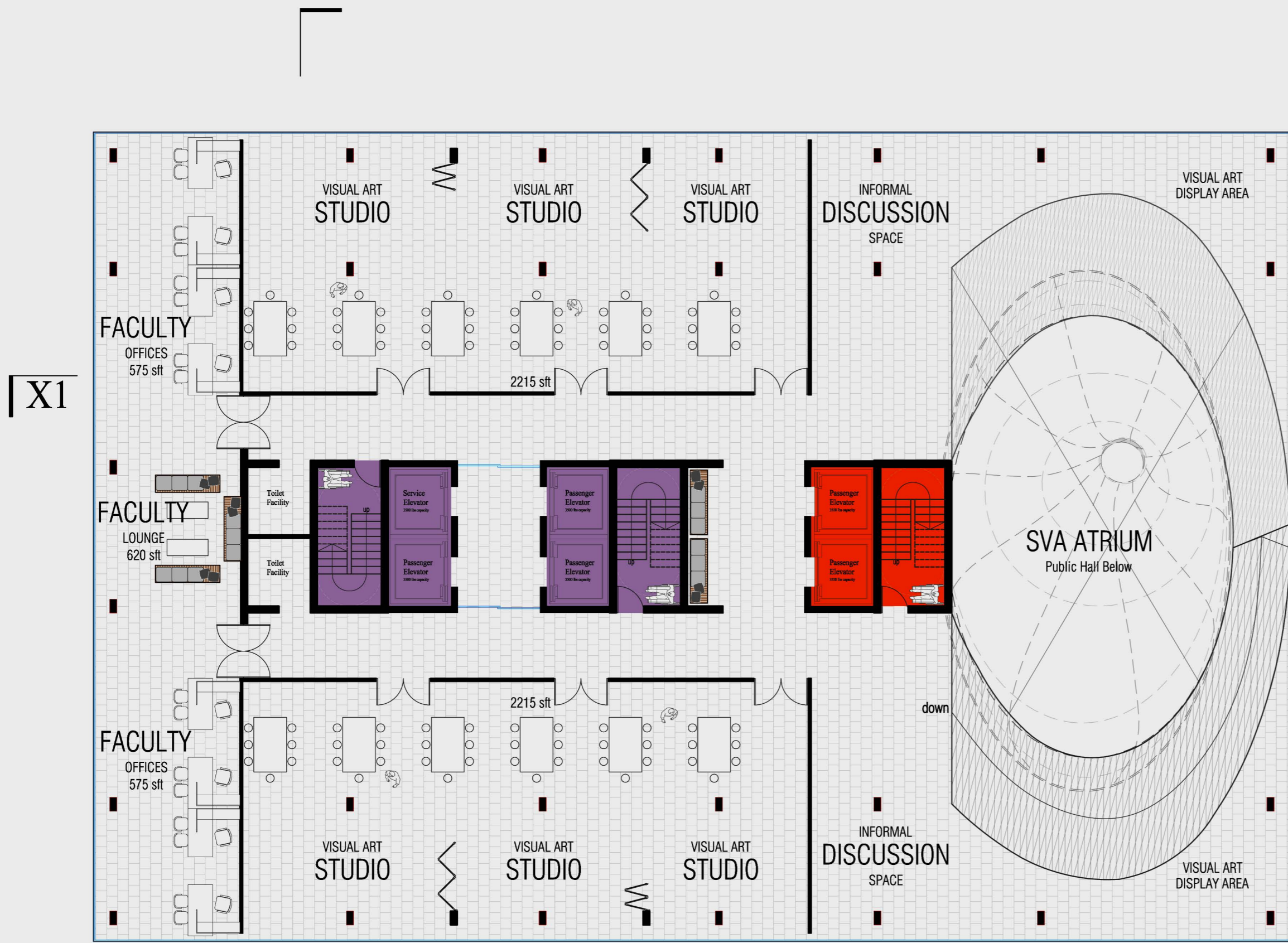




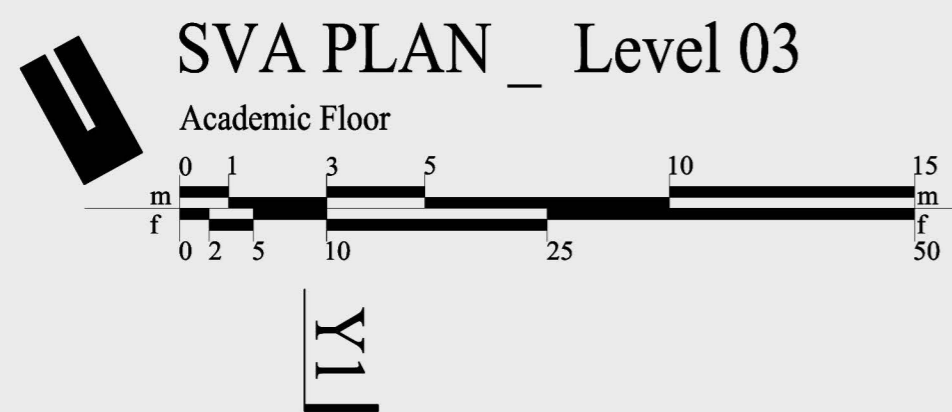
X1

XSPOT 1



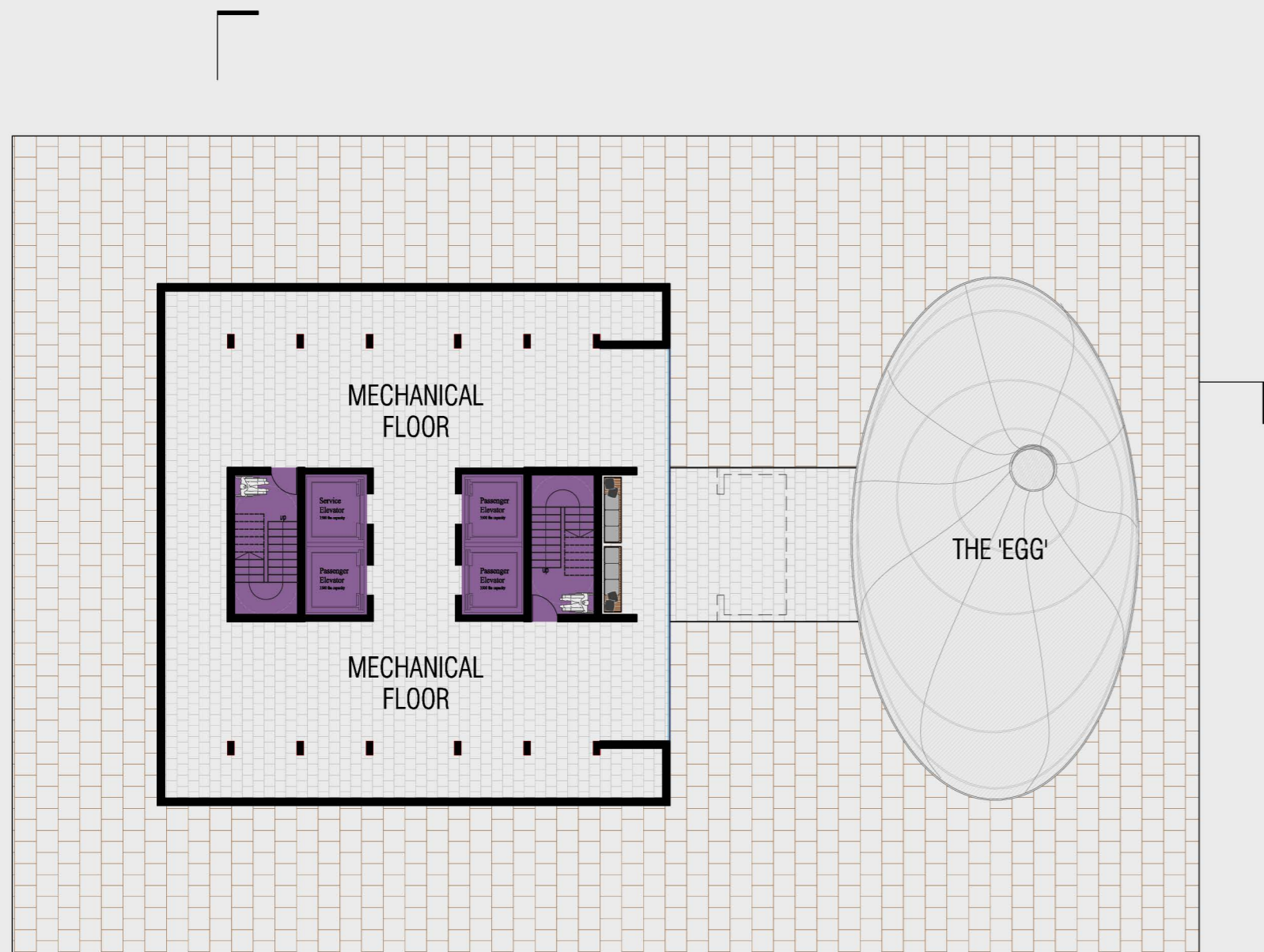


X1



SVA STUDIOS
_ INSPIRATION TO CREATE SPACES
TO ACCOMMODATE THEIR NEED





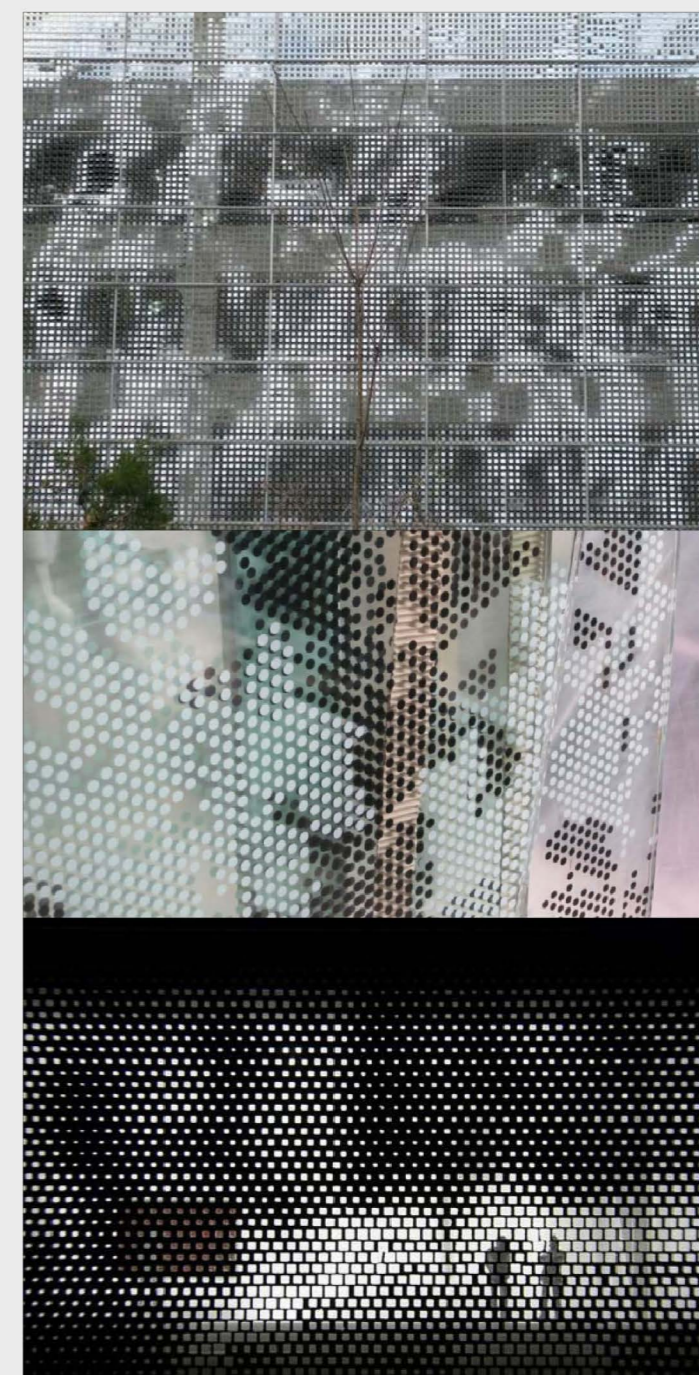
SVA MECHANICAL FLOOR FACADE MATERIAL SAMPLE
PERFORATED CONCRETE
 TO MATCH THE TOWER SCREEN

TYPICAL GLASS CURTAIN WALL

THE TYPICAL GLASS CURTAIN WALL SIMPLY CONSISTS OF AN OPERABLE MID PART AND FIXED PARTS ABOVE AND BELOW. BUT THE DIVISIONS ARE NOT TO BE SEEN IN THE ELEVATION. THE PORES WILL CREATE ARTISTIC PATTERNS ON THE SCREEN CAN MAKE THE MULLIONS FADE AWAY. THE PATTERN GROWS DENSE WHERE THE INTERIOR HAS A SOLID FACADE OR MORE PRIVATE SPACE. THE DENSITY IS LESSENERED WHERE AMPLE LIGHT IS NEEDED AND ALSO, VENTILATION AS NECESSARY.

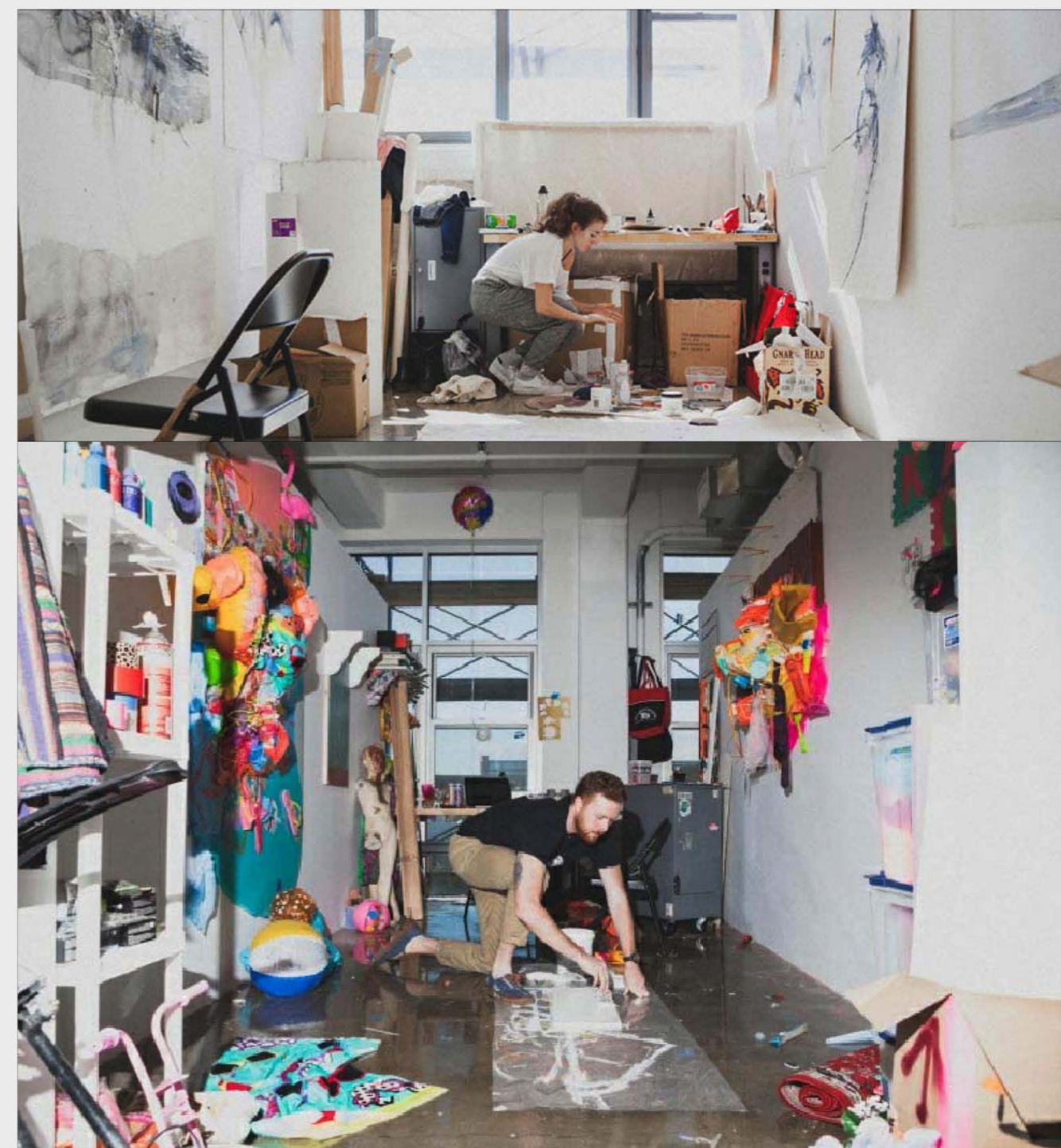
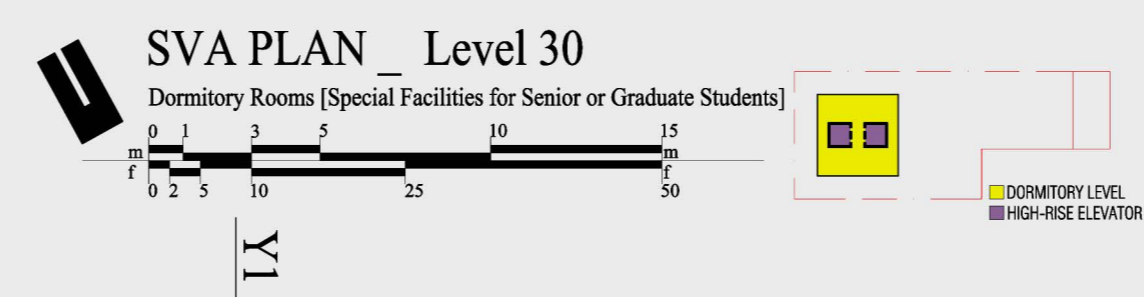
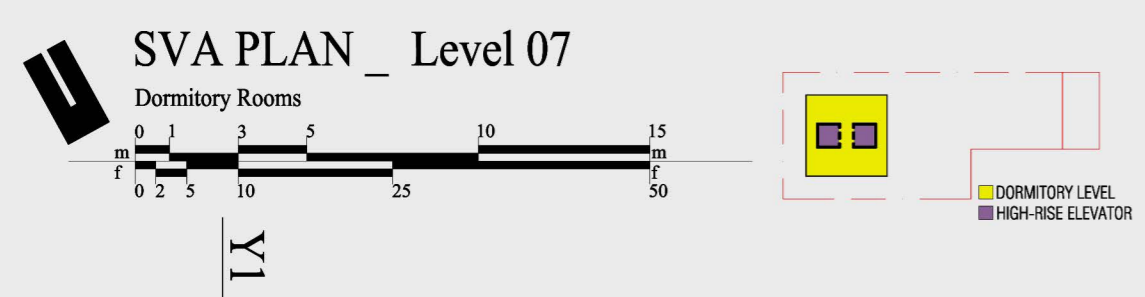
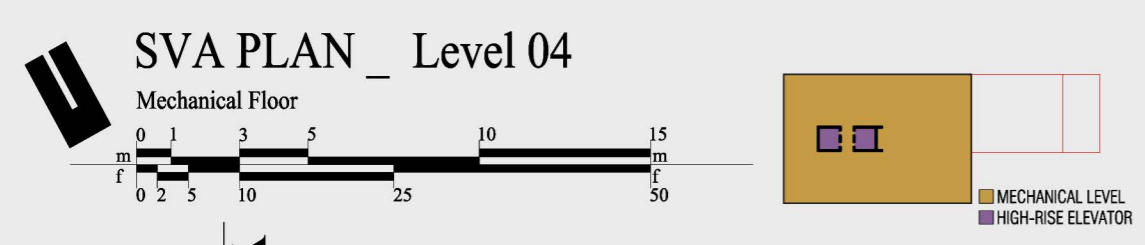


PATTERN TO BE CREATED
 ON GLASS CURTAIN SECTION



FRETTED GLASS
 LESS AND MORE POROUS ACCORDING TO INTERIOR USE

SCHEMATIC SCREEN VIEW
 AT NIGHT, TO SHOW THE SCALE OF THE PORES



SVA STUDENT-LIFE
 _ INSPIRATION TO CREATE SPACES TO ACCOMMODATE THEIR NEED



SVA - EXTERIOR VIEW FROM NORTH-EAST
LOOKING FROM THE 1st AVENUE

school of visual arts : section(s) & 3d view showing elevations



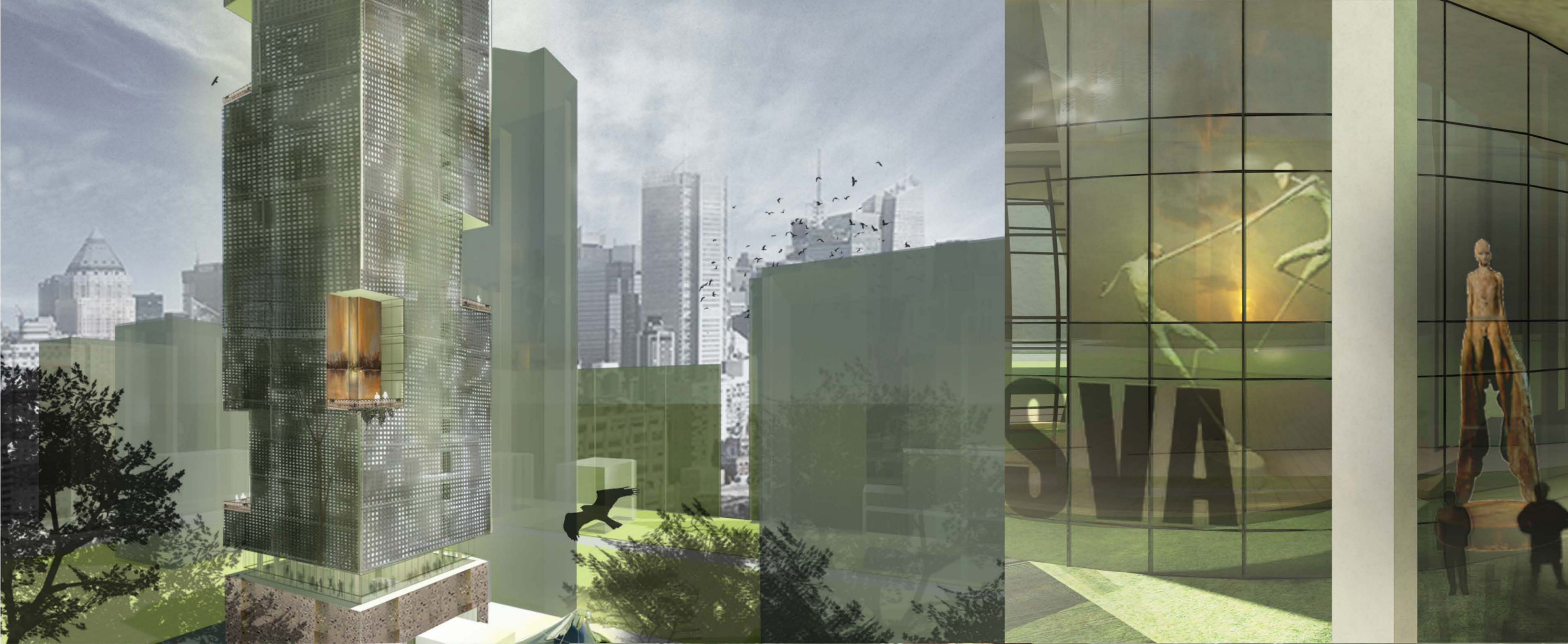
school of visual arts : 3d view showing transparent and welcoming ground levels and the sculpture court forming the transitional space and the entrance plaza as well



school of visual arts : 3d view showing transparent and welcoming ground levels and the sculpture court, the entrance plaza, the academic levels with visual art display areas and the 'egg'



school of visual arts : 3d view showing the almost transparent fritted glass screen and the urban apertures crawling up the tower; the double height common workspaces and interaction spaces



school of visual arts - 3d views showing urban apertures, common workspace and informal visual display area for sva people; section showing gallery spaces, entrance sculpture court, lounge, public hall, art store and other public facilities