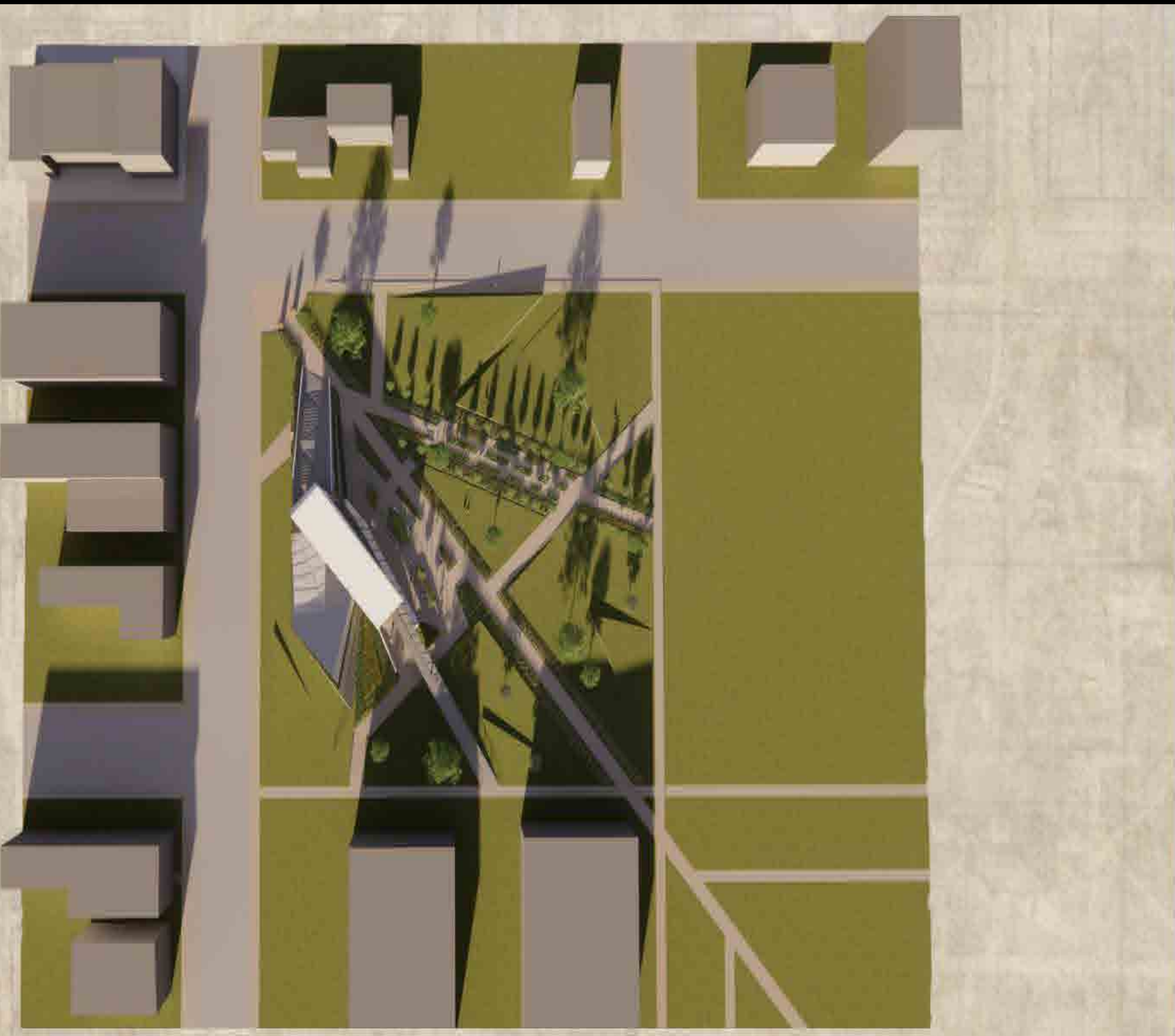


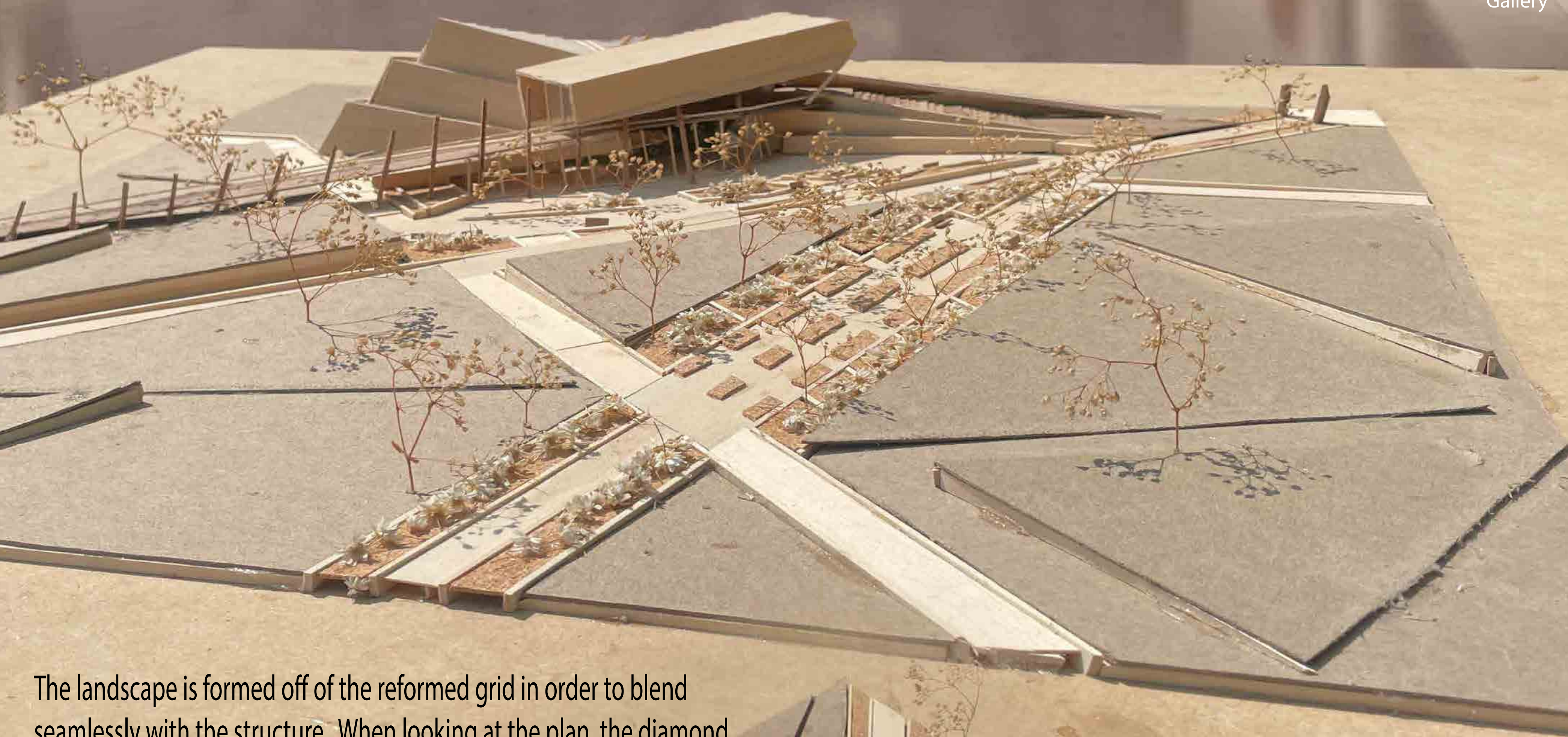
A Reunited Grid



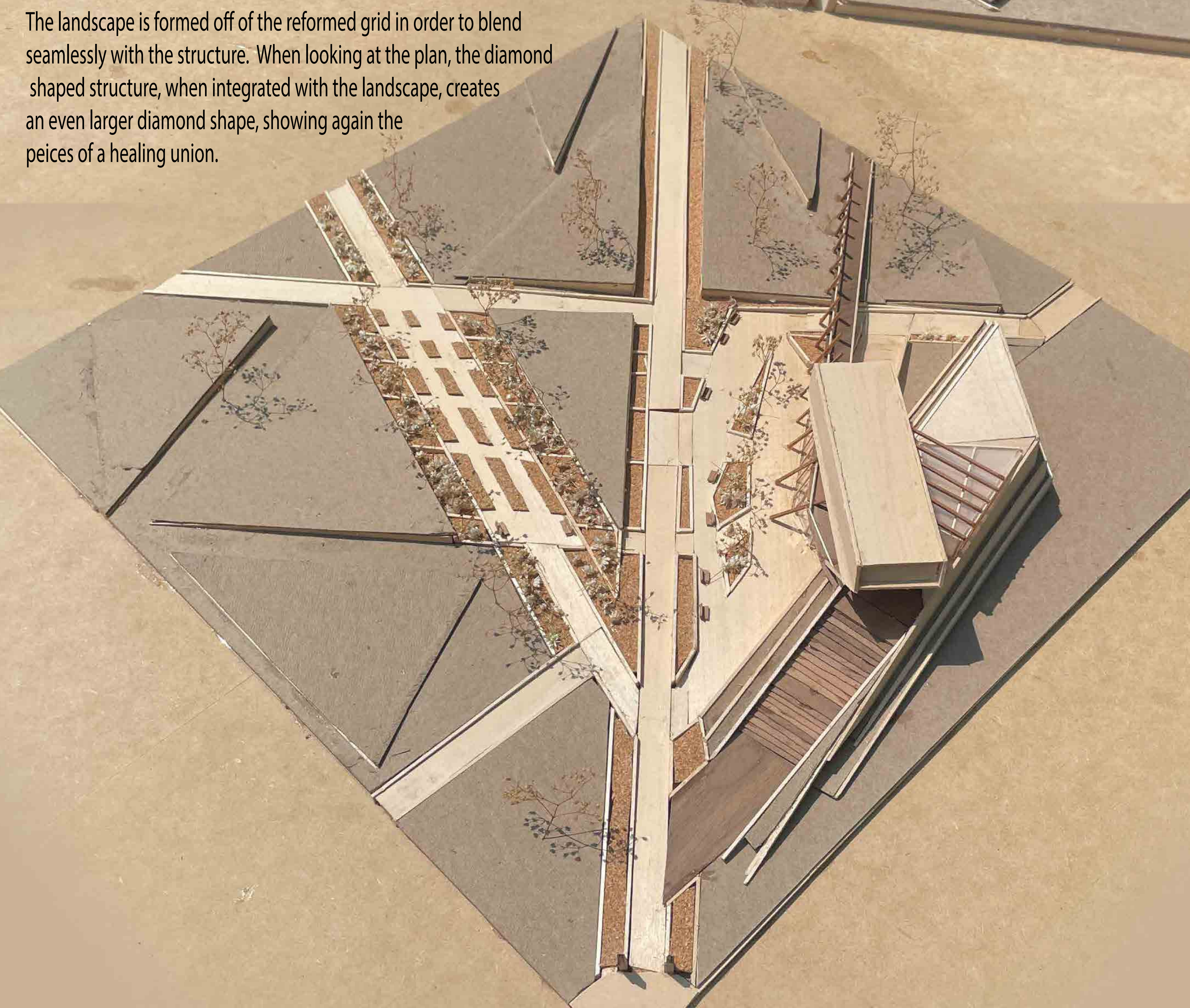
The rectangular structure of the northern-stretching building is meant to relay to the orthogonal forms of the surrounding structures, yet it is no longer on the old grid, and using the healing grid, is now slanted and hoisted off the ground by posts inspired by that found in native structures.



Gallery



The landscape is formed off of the reformed grid in order to blend seamlessly with the structure. When looking at the plan, the diamond shaped structure, when integrated with the landscape, creates an even larger diamond shape, showing again the peices of a healing union.



Exterior Circulation

The bridge offers a 24/7 circulation as well as allows views into the interior below



Landscape from the Northreast

Throughout the site the landscape breaks apart in fractured shards that push up follow the new sowed grid: A wound that is healing- the peices of the diamond reforming



Sculpture Garden