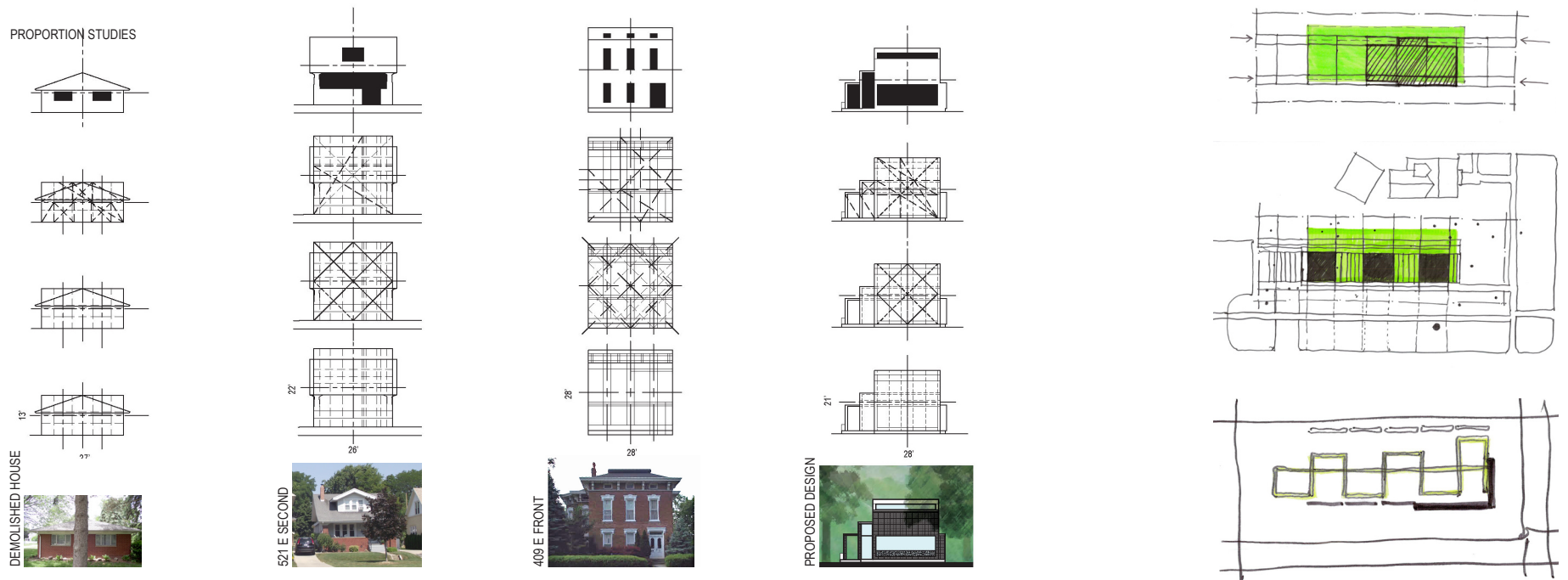


Silver Lining House is a Modern Revival residence located in a Historic District neighborhood. Replacing a nondescript Ranch, the new architecture is inspired by a revisionist historical perspective, exploring what the original 1955 design could have been as significant from the Mid-Century period. This design process led to create a small, airy and simply layered structure – a Case Study bar house of our time.

The ethereal effect of a silver lining influenced the outer zones of the envelope and the movement of the domestic environment. Planar elements employ the study of Casimir principals to create an atmosphere of vibrancy and linear flow. These parallel and bent zones organize the residence into a minimalist 3,000 SF structure including a connecting Gallery space, a large Living area, 3 Bedrooms, 3 ½ Baths, Laundry, Play, and Work spaces, and a 2 car garage.

The design is proportionally driven by nearby classic historic Italianate and Bungalow style structures and their similar principles with the Modular. The interior is wrapped by panoramic viewports, expanses of glass, and the porous metal scrims of the envelope. Sustainable and highly insulated, the house is blanketed in dense insulation, white membrane, a stainless steel rain screen, and high performance glass allowing ample natural daylighting and visual connection.

When the Owners returned from California to Northwest Ohio, they sought new hope to re-energize their young family after experiencing the life changing loss of a newborn. Looking to create a silver lining environment in which to thrive became their mission. This corner lot, guarded by a large old tree, gave them an opportunity to build anew.



2018 AIA DESIGN AWARDS  
SILVER LINING HOUSE