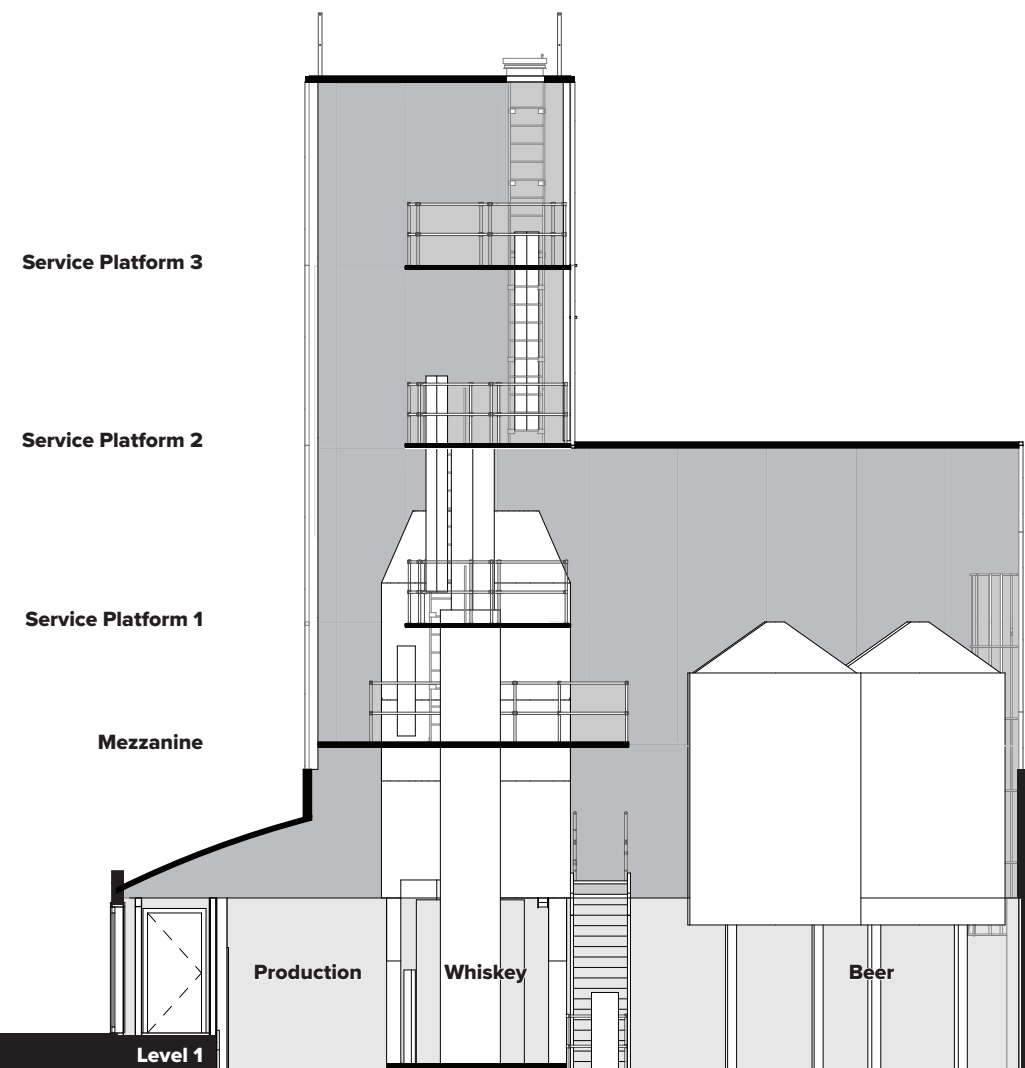


The tasting room and adjacent private function room feature exposed ceiling structure with a new skylight over an antique bar and seating. A large set of collapsible window panels open to a street-side patio. In this way, the re-imagined distillery directly participates in and amplifies the lively retail and entertainment neighborhood. Behind the public spaces, the production area features a series of industrial, steel-structured mezzanine levels climbing to the uppermost sections of the stills to provide access for operations and maintenance and for public tours.

The second level includes a public education space with a projecting frameless glass window to capture views of the neighborhood.

The singular, monolithic nature of the addition and its disconnected relationship with the ground plane create an ambiguity of scale. Its contrasting relationship with the historic warehouse clearly illustrate its role as a “parabuilding” – that is, an addition or alteration (“parasite”) to an existing building (“host”) that transforms the essential character of the original structure.



B. NORTH/SOUTH SECTION, LOOKING EAST



Still tower, looking up