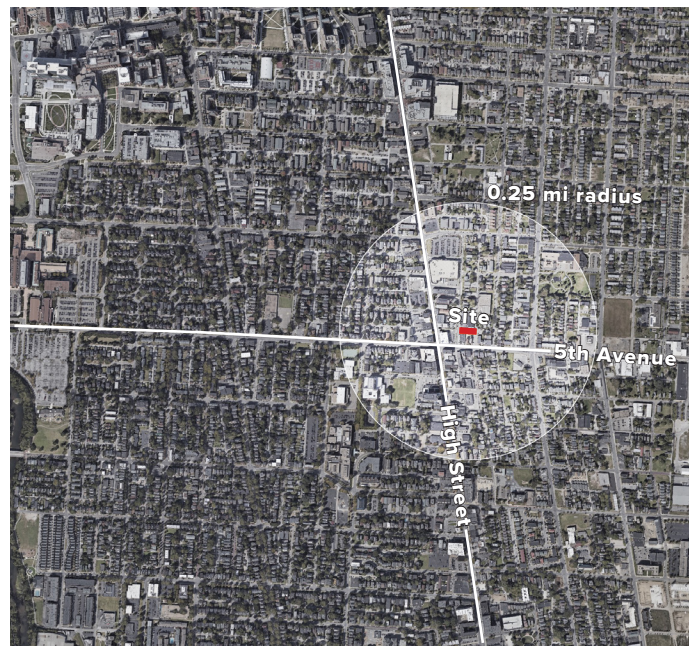


MIDDLE WEST SPIRITS

2017 | COLUMBUS, OHIO

Middle West Spirits operated their artisan small batch distillery business from a 10,000 square foot, 1920's era historic warehouse structure in a quickly gentrifying urban neighborhood of Columbus for several years before deciding to expand. Their plans to increase their capacity required new distillery equipment, including stills between 15 and 50 feet in height and several large fermenter tanks, as well as a public tasting room, bottle shop and offices. To accommodate this equipment, a center portion of the original steel bow truss and wood roof was removed and a new 55 foot tall, tiered steel structure was inserted over new foundations below. The new structure was clad entirely in Kalwall panels, creating a monolithic translucent white tower with both a striking and subtle daytime presence and a glowing, beacon-like quality at night.



CONTEXT MAP 



SITE PLAN 