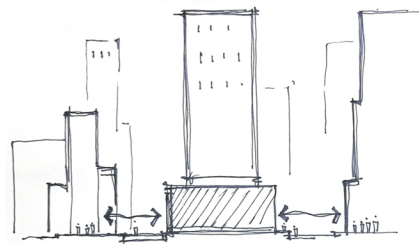


# AMAZON HQ2

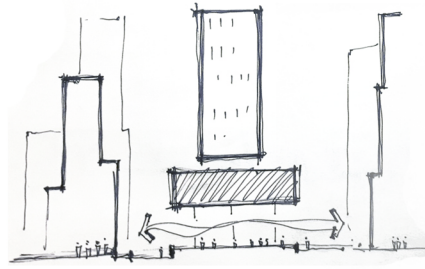
St. Louis

I strongly believe that a high-rise building's significance is not just only creating a landmark in the sky line but also creating an everlasting experience by directly interacting with its users, public and the vicinity around it.

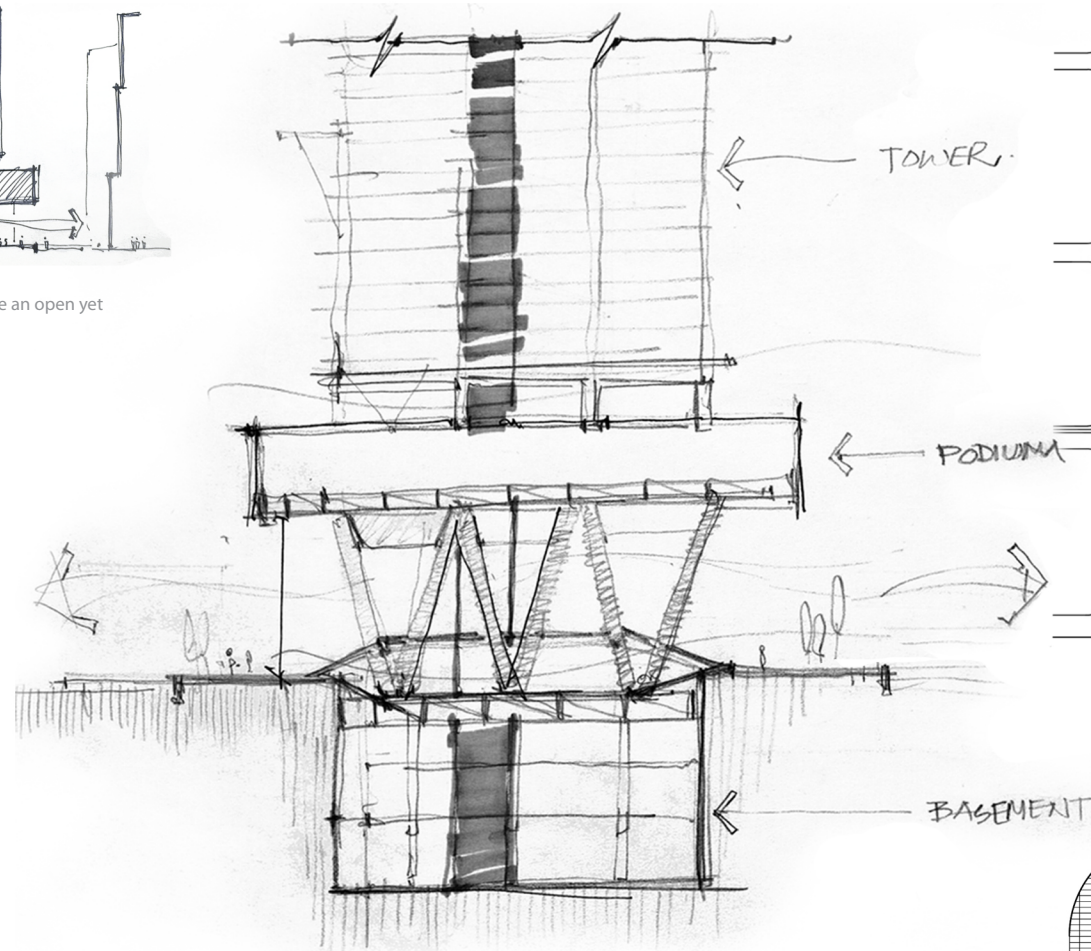




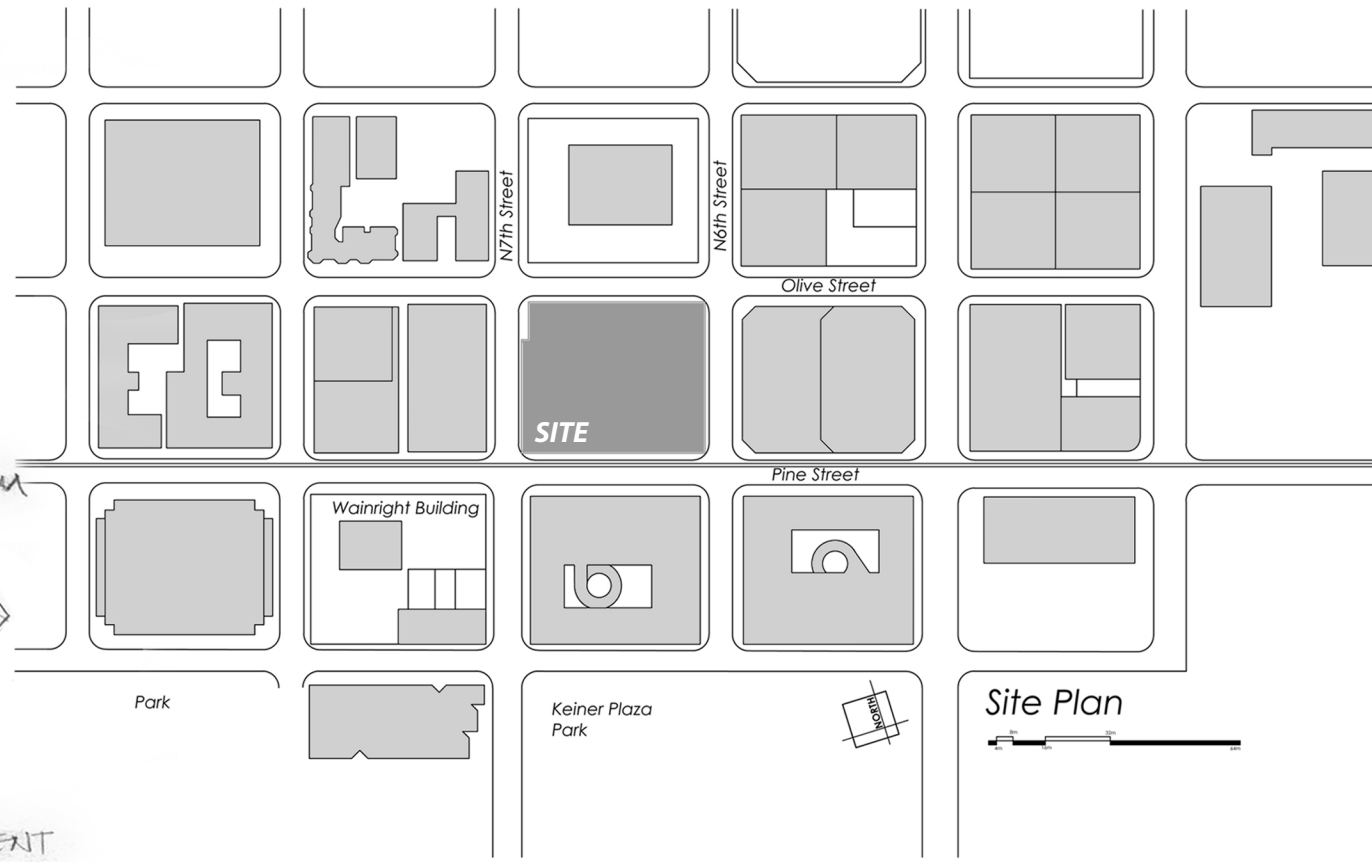
Typical HighRise (Podium occupying the Ground Floor)



Podium Lifted above to create an open yet vibrant Ground Floor



Conceptual Sketches

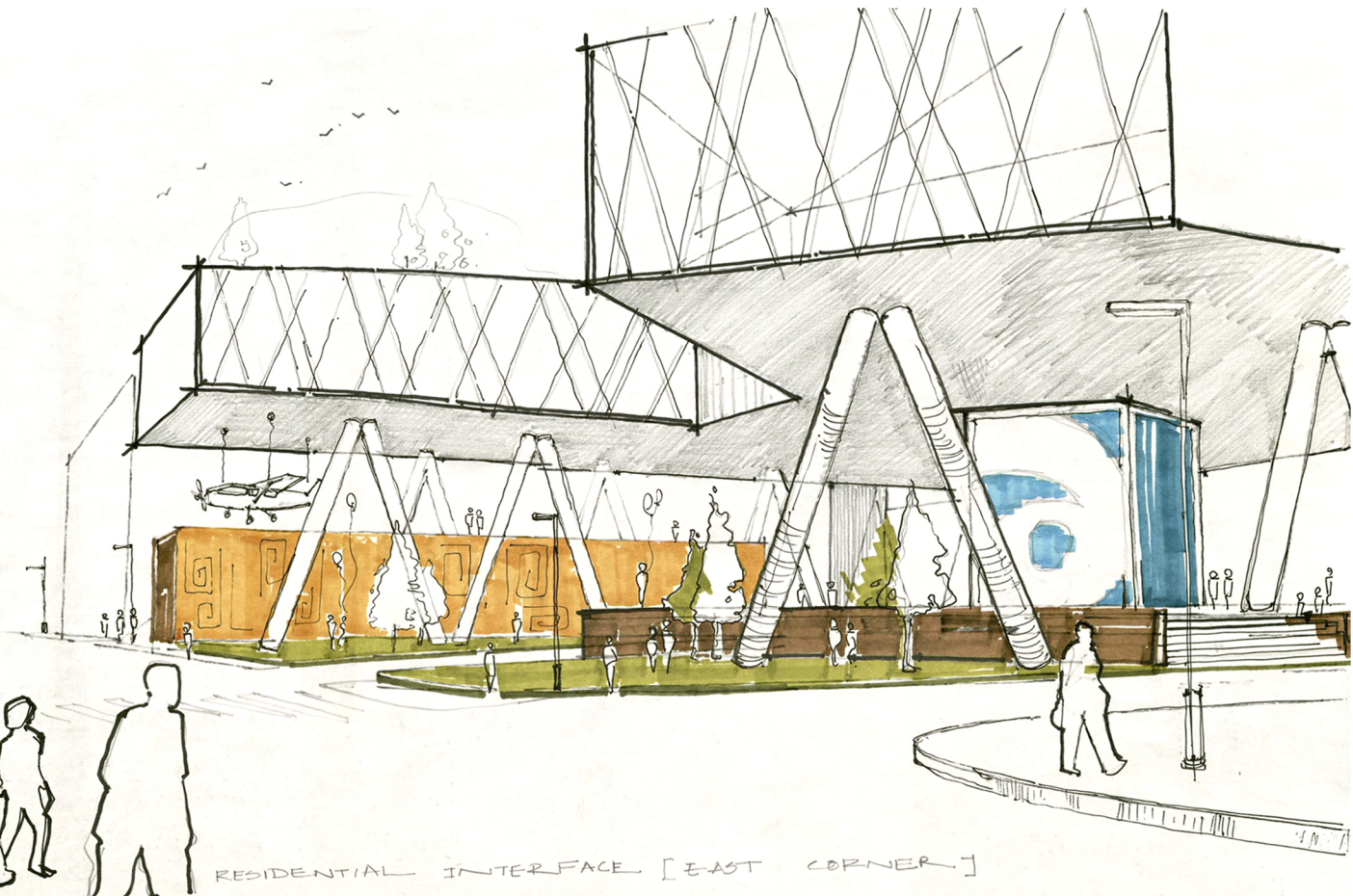


Site Plan

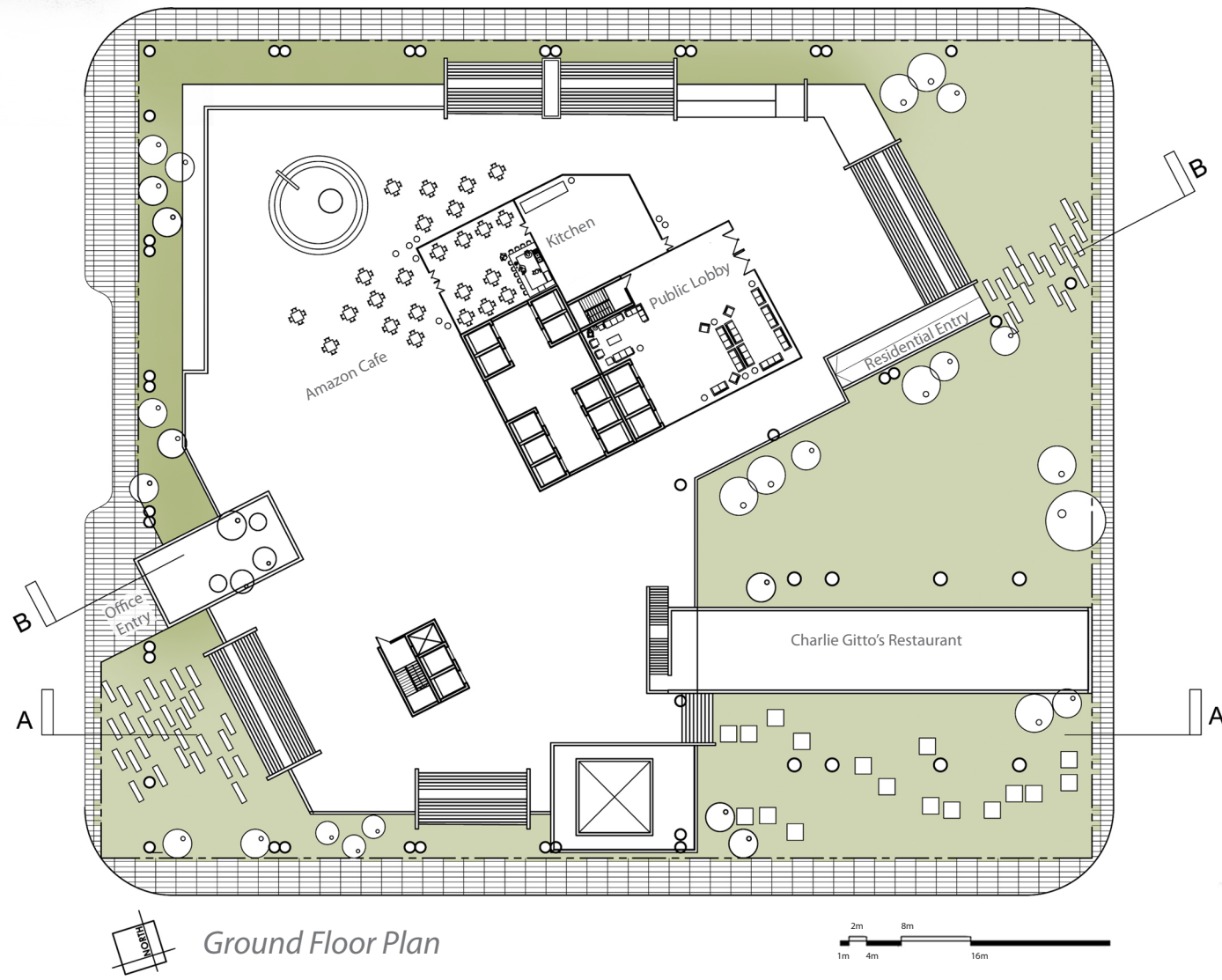
**IDEA**

Creating an interactive dialogue with the public was one of the key ideas when designing the second headquarter for one of the most valuable public companies in USA.

The site is located at the very center of Downtown St. Louis, surrounded by high rise buildings. Instead of typically blocking the entire ground level by massive podium, I lifted the whole podium above the ground to create a very dynamic public realm underneath it. This open ground level works as a multi-functional space for public.

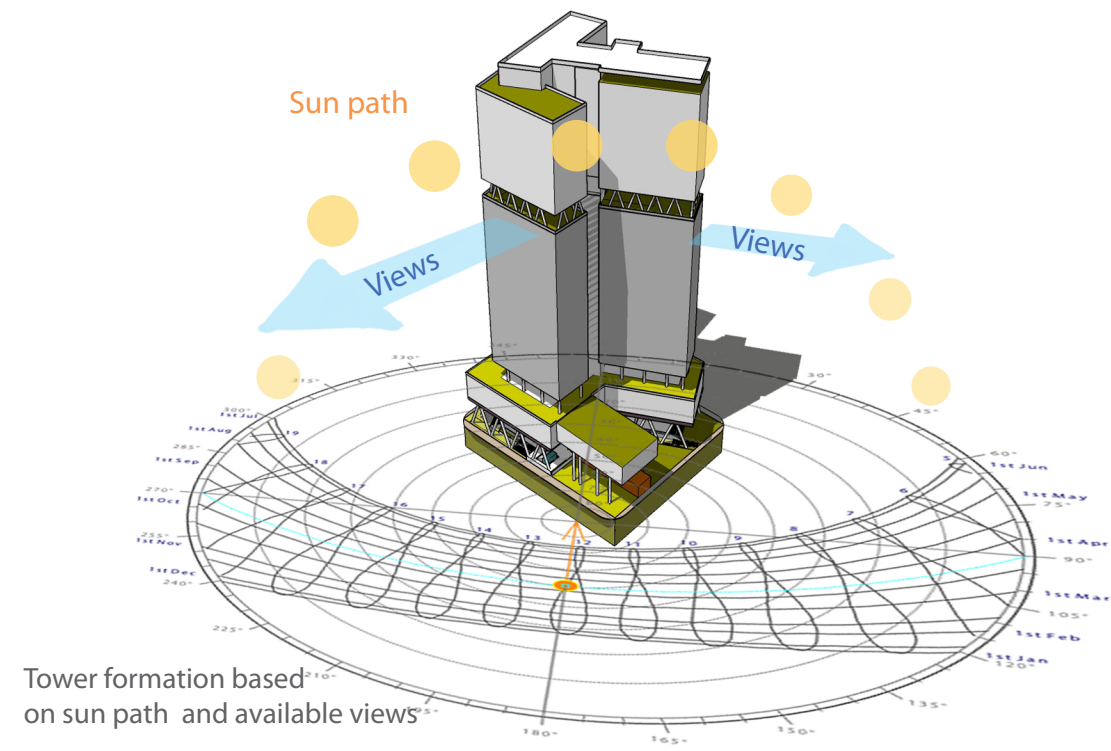


RESIDENTIAL INTERFACE [EAST CORNER]



Ground Floor Plan





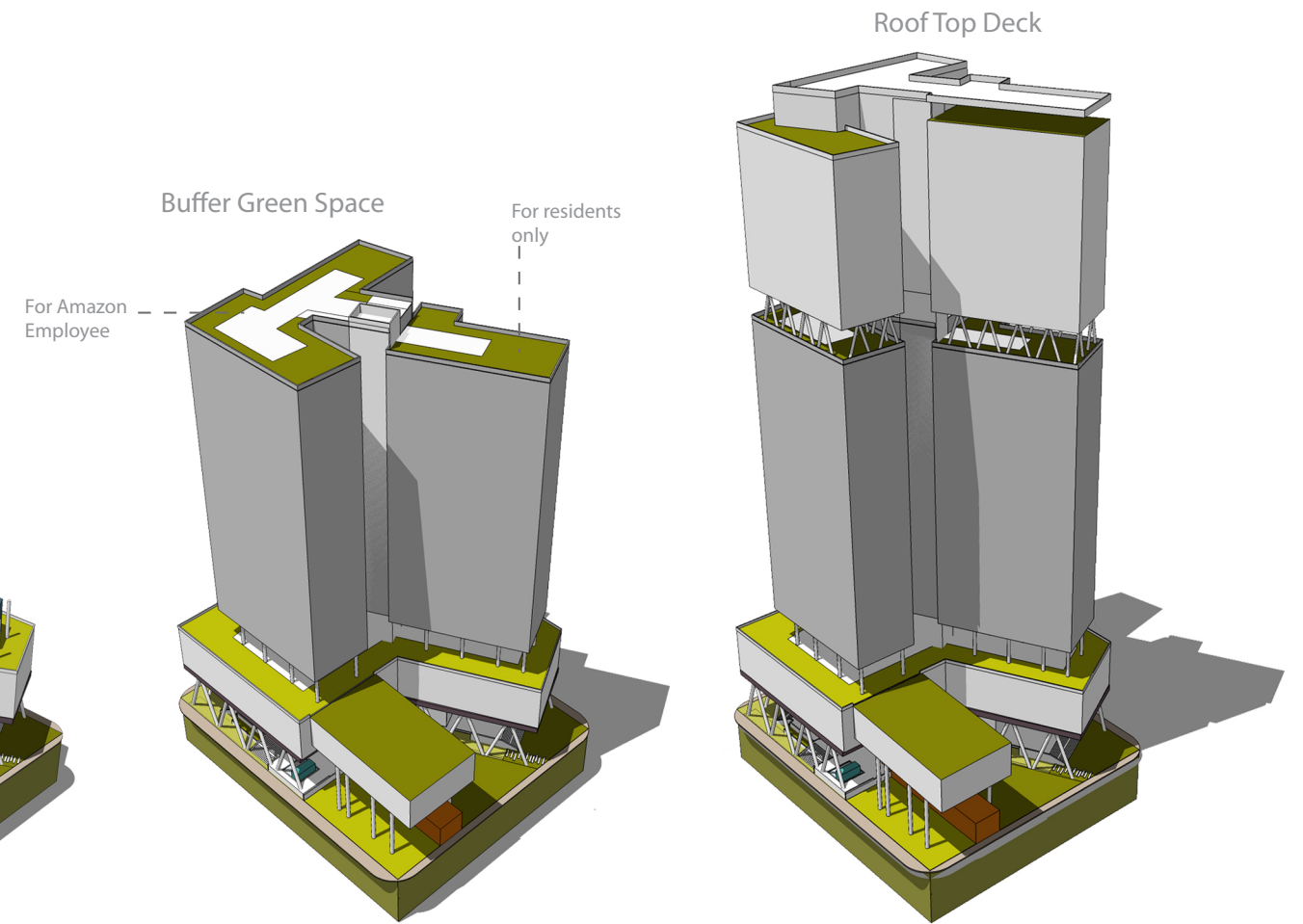
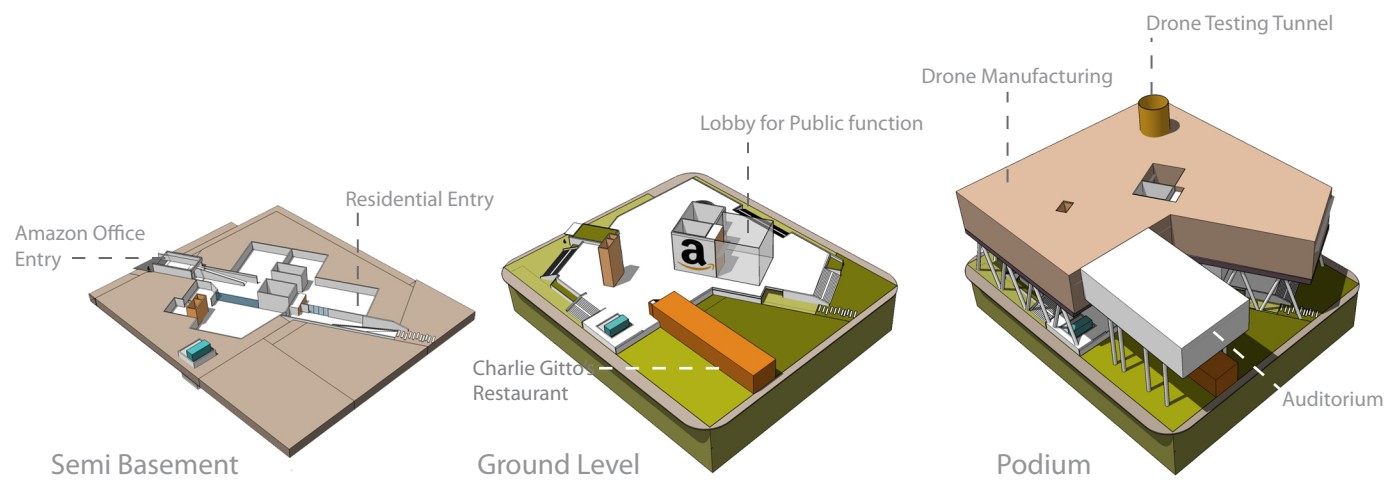
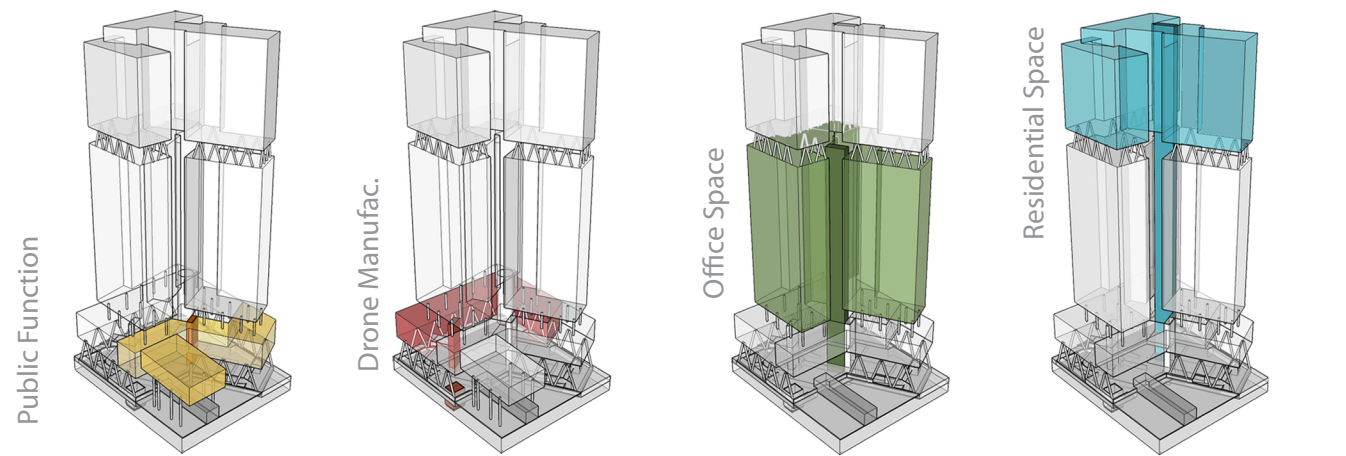
### Building Formation

The tower has a clear vertical distinction of different usage type. One is office usage and other one is residential usage. There is a transitional space in between this two usage type. This intermediate green space will work as a community space as well as leisure space both for office and residential user.

The shape of the tower was derived from the sun path diagram as well as the available views around the site

### Program/Space Allocation (Level-wise)

- Basement:** Container Storage, lobby, washroom,
- Semi Basement:** Amazon entry lobby, Mechanical Room, Generator Room, Residential Entry and lobby
- Ground Floor:** Charlie's Café, Amazon's Café (public), Amazon display, Amazon booth
- 1st Floor (podium, 16 m):** Drone material sorting and storing, assembly, Auditorium Private Entry
- 2nd Floor, 22 m:** Drone Testing and wind tunnel, packaging, storage, Auditorium public entry & lounge, Customer Service
- 3rd Floor, 30m:** Wellness center, Sports Zone, gym, Cafeteria
- Office Floors:** 38m- 120m
- Residential Floors:** 129m- 175m





*The Auditorium*



*The Spirit of St. Louis*

*Drone manufacturing Level*



As per the project's requirement, Charlie Gitto's Restaurant (historically valuable) located in the site, is preserved to its original location and state along with displaying a full size replica of 'The Spirit of St. Louis' (the first solo, non-stop, transatlantic flight in 1927 from New York to Paris). The project dedicates a separate zone in the ground level as 'St. Louis corner' to make the restaurant stand out along with the full size replica of 'the spirit of St. Louis'. The exterior walls of the restaurant contain mural drawing portraying history of this city graphically. All these together depict culture, history and heritage of St. Louis in a cohesive manner.

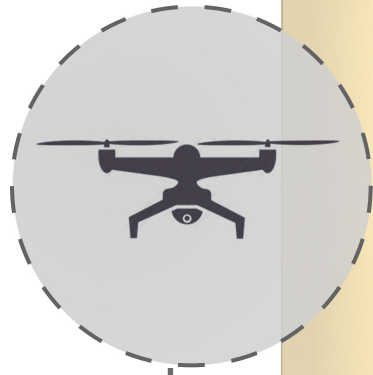
*Mural Painting wall on Charlie Gitto's Restaurant*



*Pine Street*



*N6th Street*



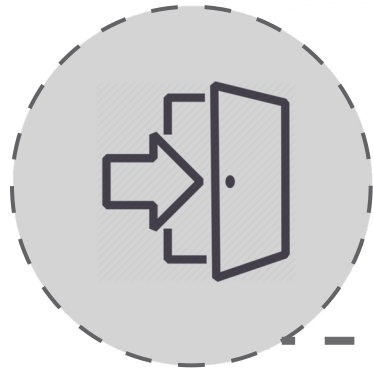
Drone Testing Tunnel



AMAZON Cafe

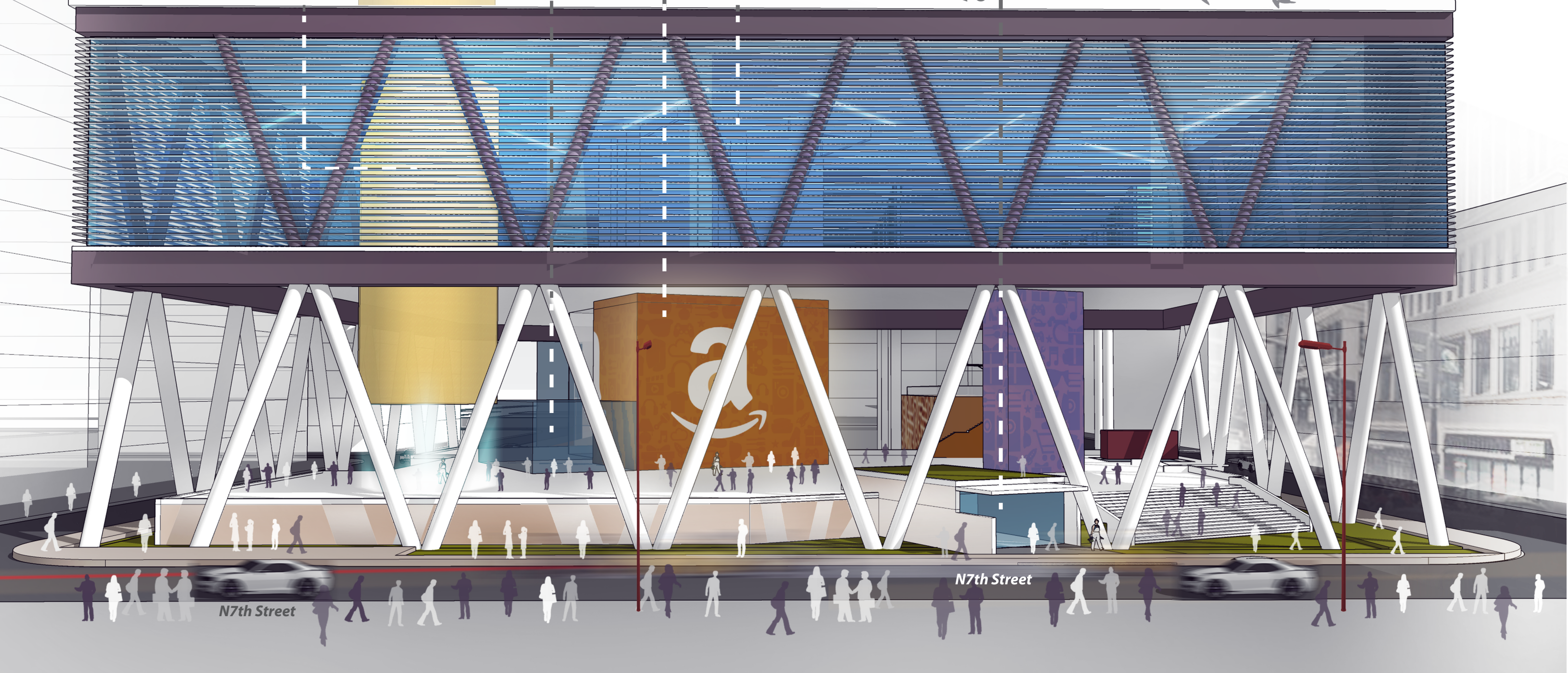


Large Screen Display  
Drone Manufacturing



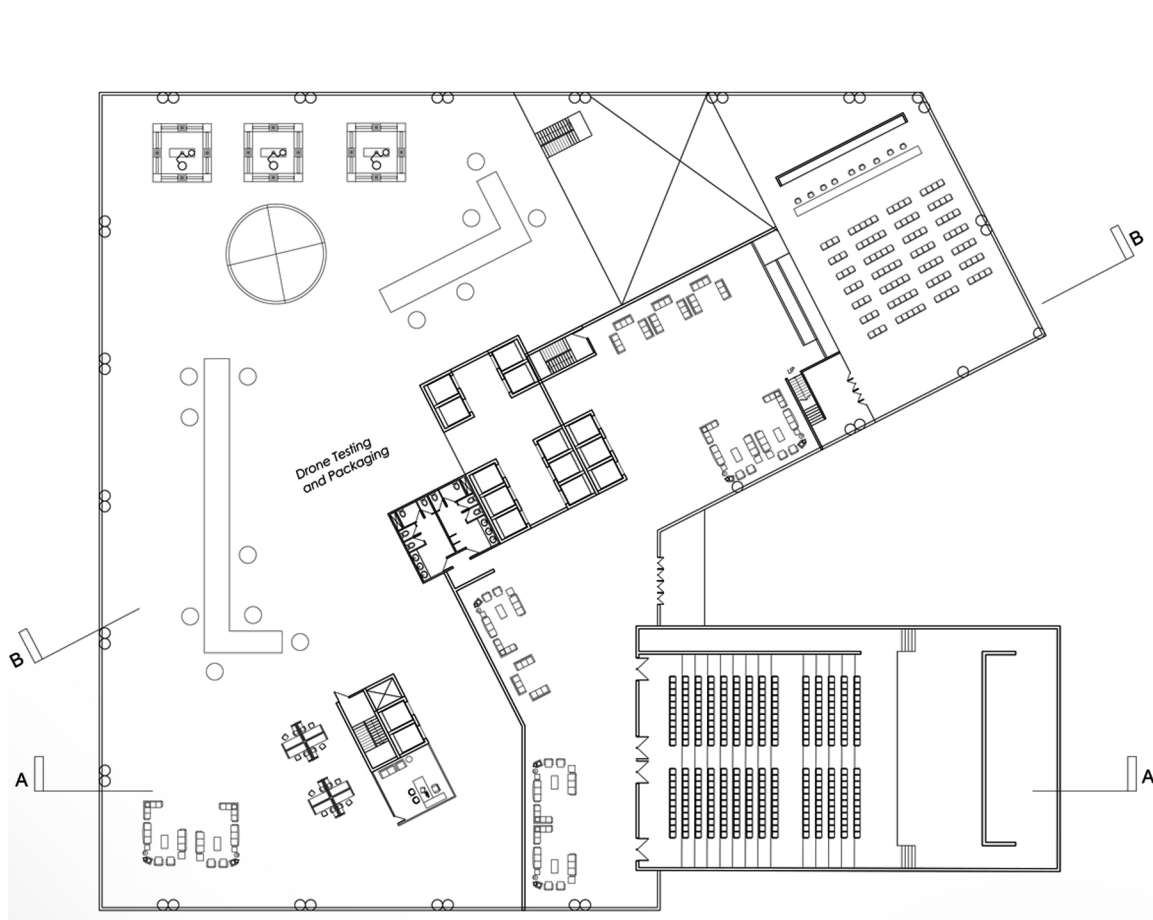
AMAZON Office Entry

The office entry and residential entry occur through the semi basement level as the entire ground level is dedicated for public use. This open ground level works as a multi-functional space where exposition, exhibition and public gathering takes place. People can enjoy the display, get familiar with the new products and offers, roam around the 'St. Louis Corner', hang in the Amazon café, and enjoy the Amazon drone testing as the drone testing tunnel comes down from the manufacturing level to a certain height of ground level for public exposure.



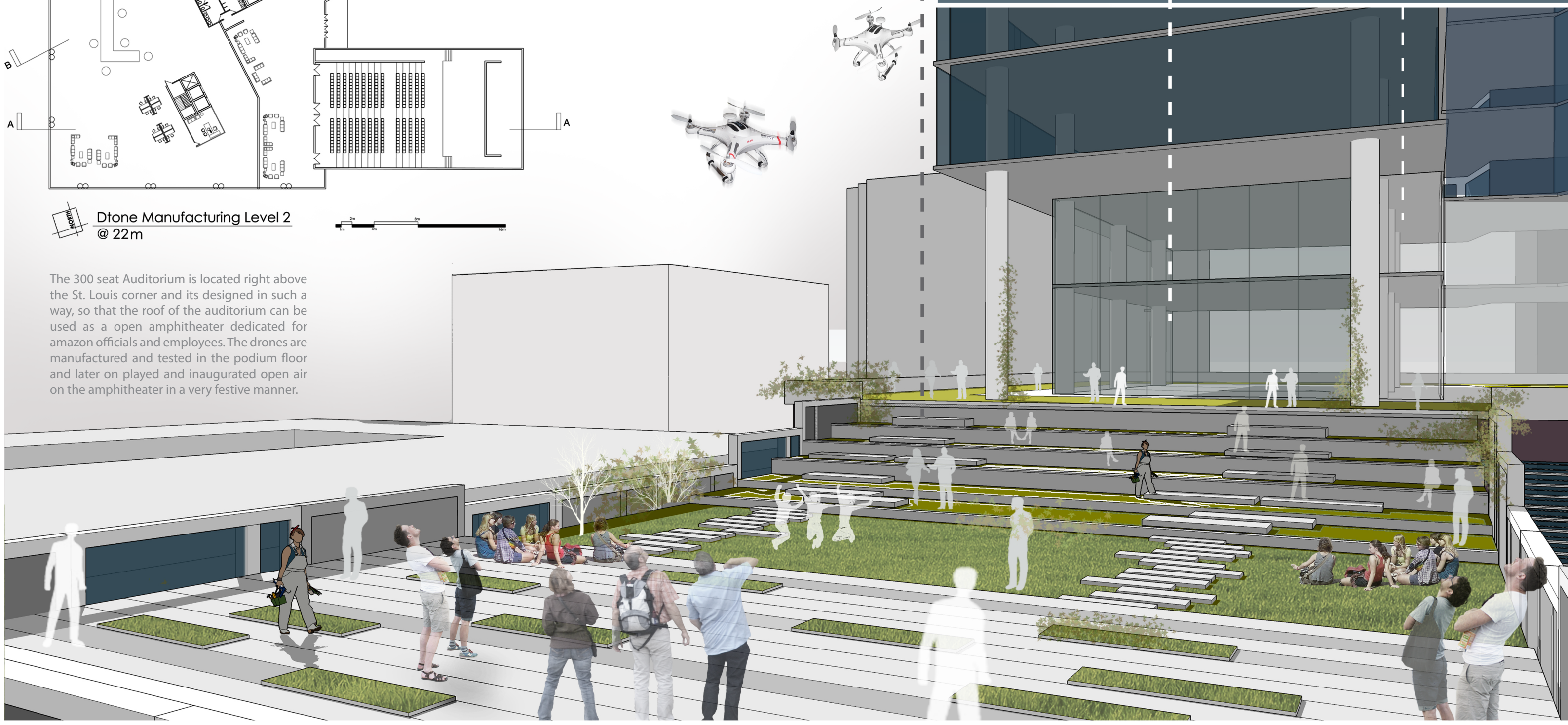
N7th Street

N7th Street

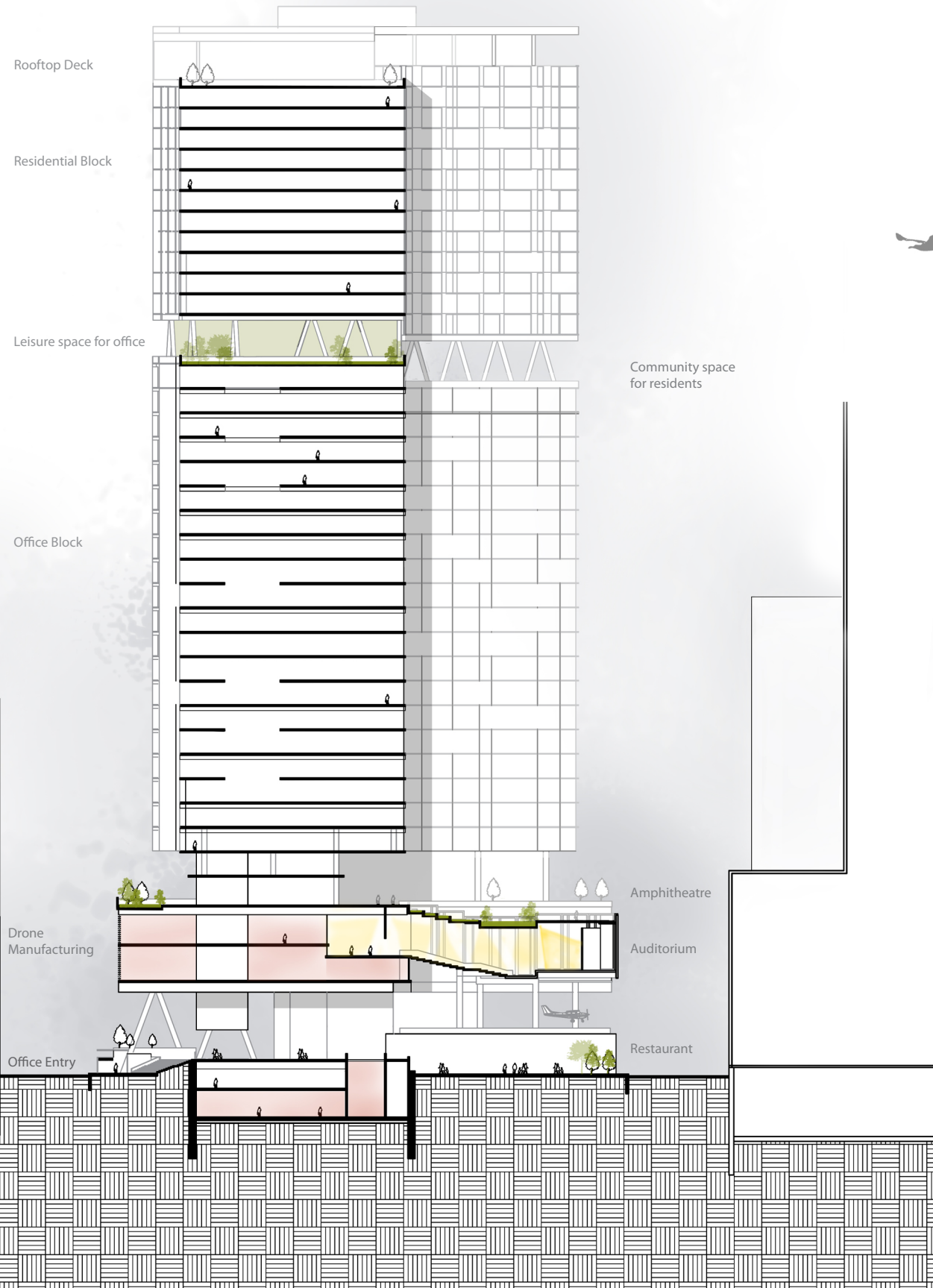
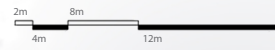


**Drone Manufacturing Level 2 @ 22m**

The 300 seat Auditorium is located right above the St. Louis corner and its designed in such a way, so that the roof of the auditorium can be used as a open amphitheater dedicated for amazon officials and employees. The drones are manufactured and tested in the podium floor and later on played and inaugurated open air on the amphitheater in a very festive manner.

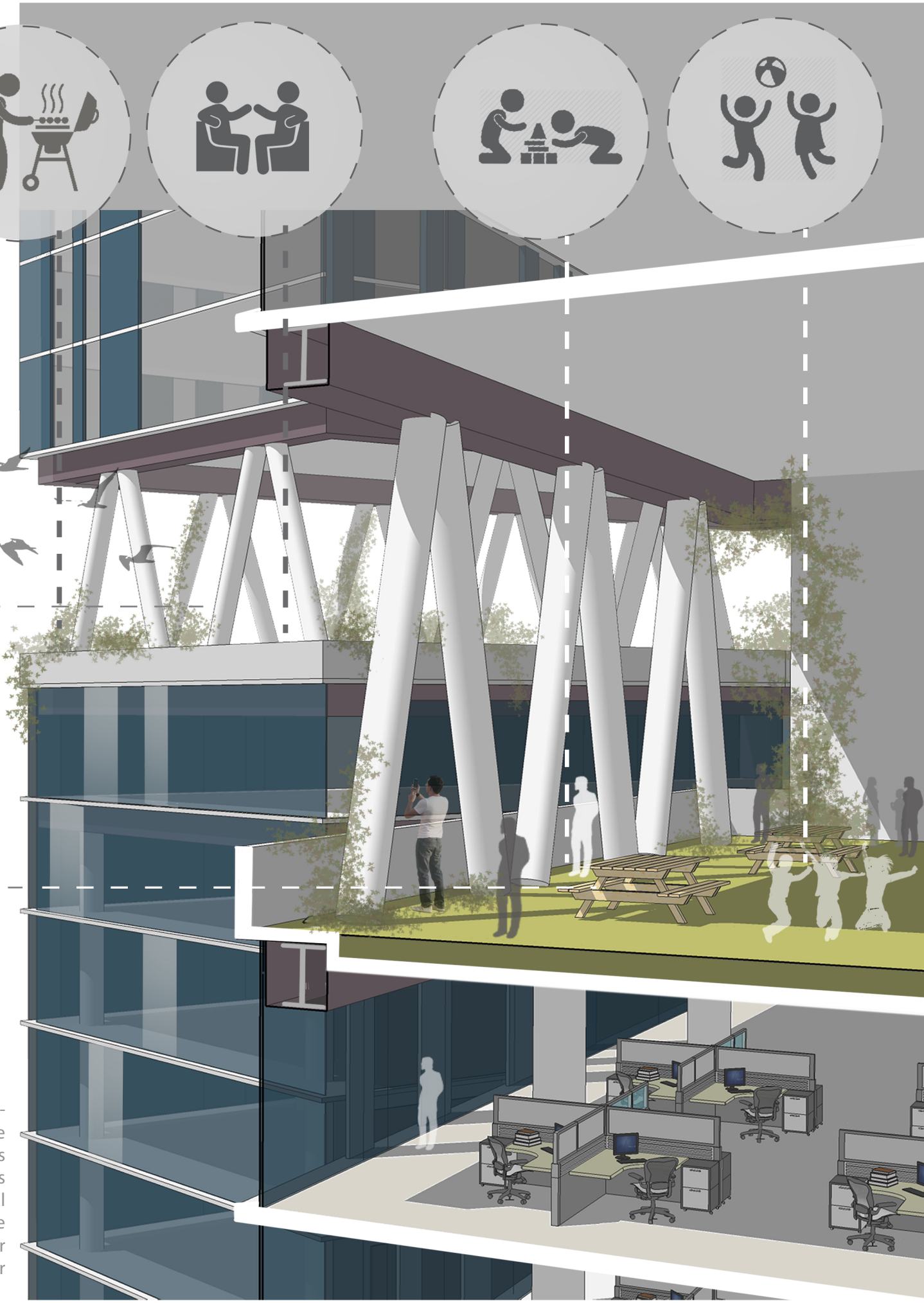


Section AA

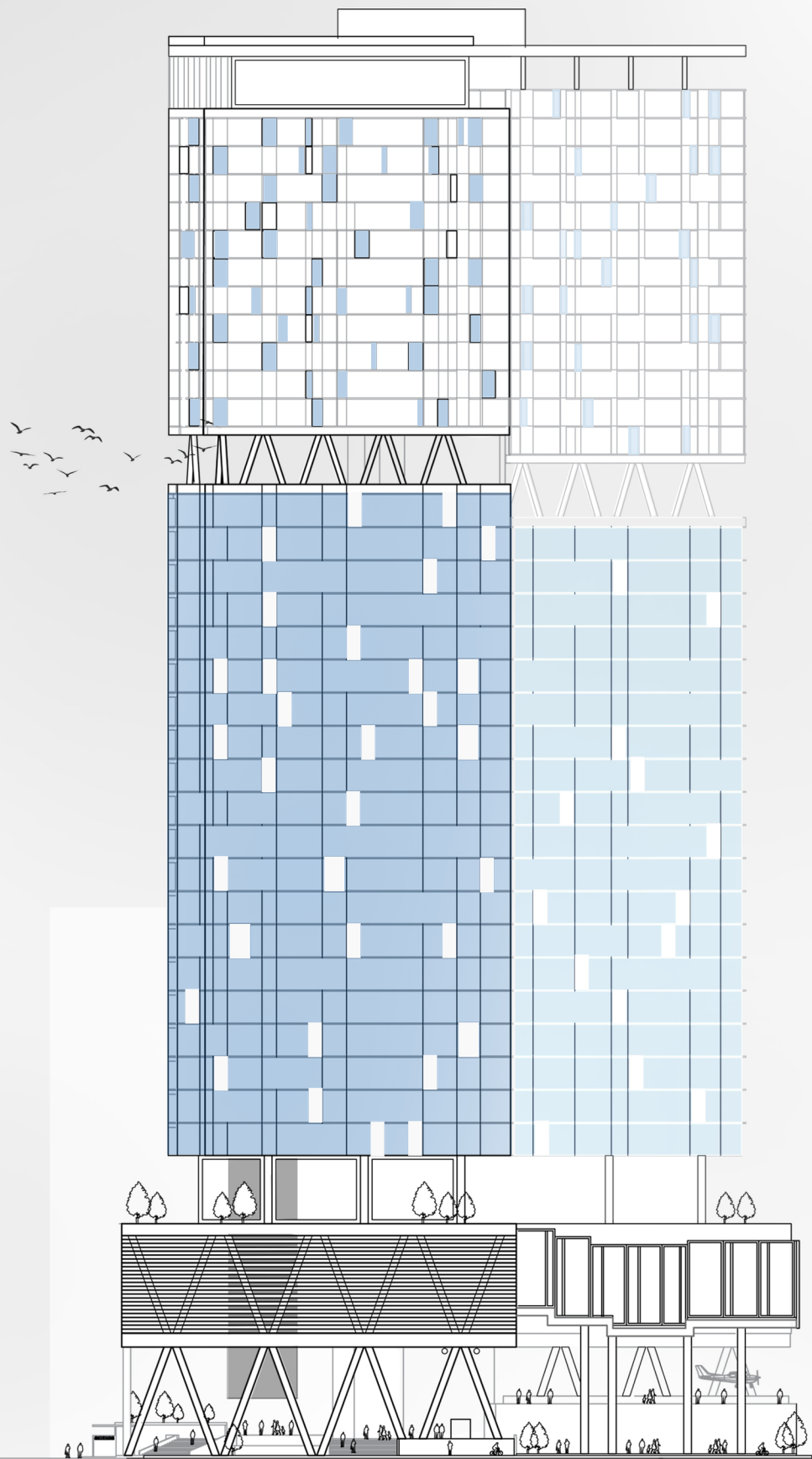


Leisure space for office

Community Space for Residents



The tower has a vertical separation between the office space and the residential space. This intermediate transition works as a community space as well as leisure space both for office and residential user with a clear separation from each other vertically and horizontally.

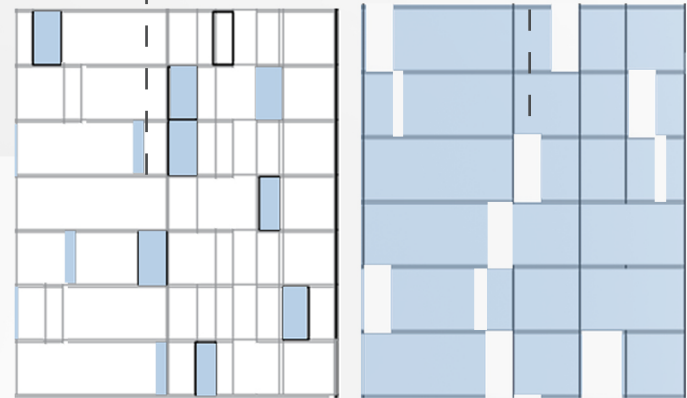


South Elevation

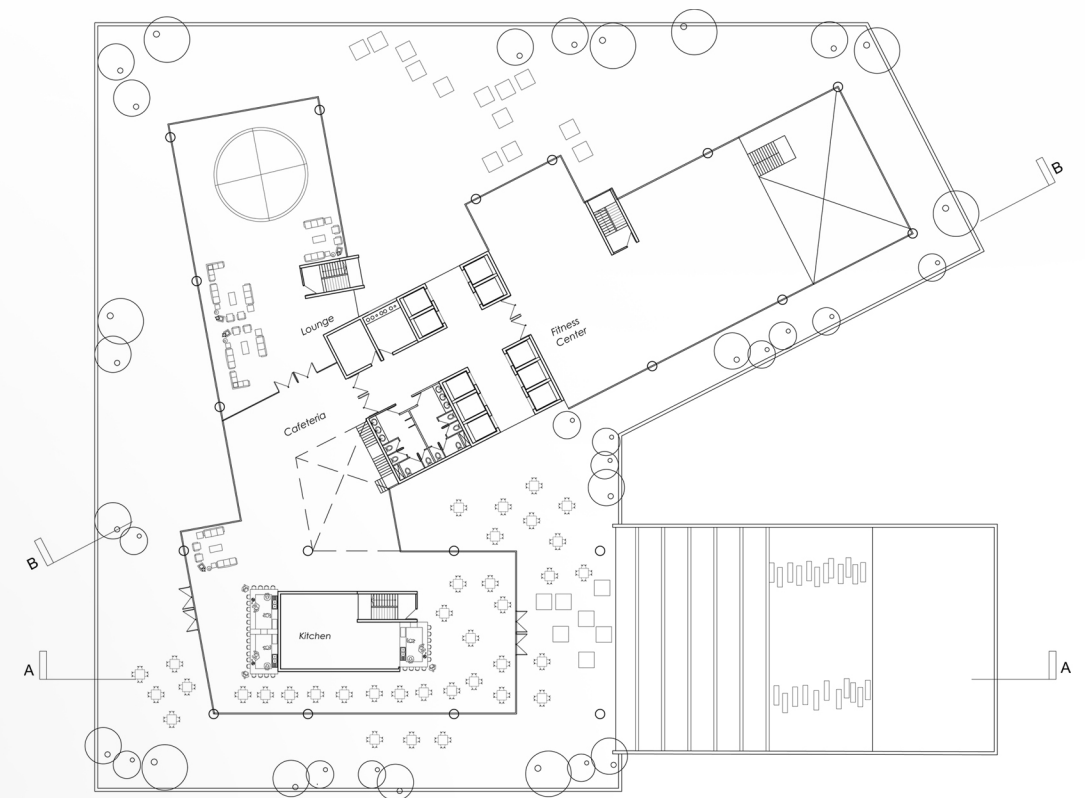
**Elevation & Shading**

Blue shading panel against transparent clear glass of residential portion

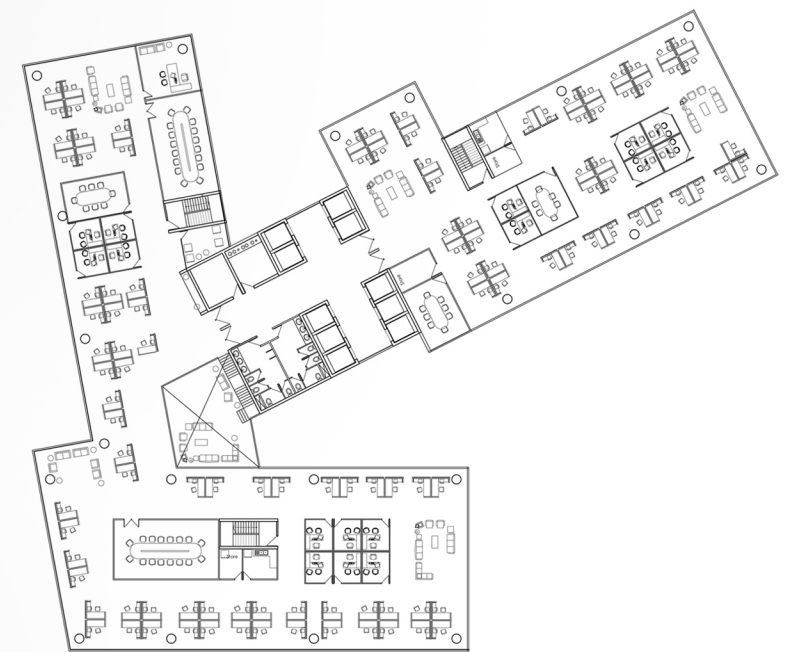
White shading panel against blue tint glass of office portion



Vertical shading panel can rotate and move sideways along the channel through out a day based on the position of the sun. Thus it will create a constantly changing elevation pattern.

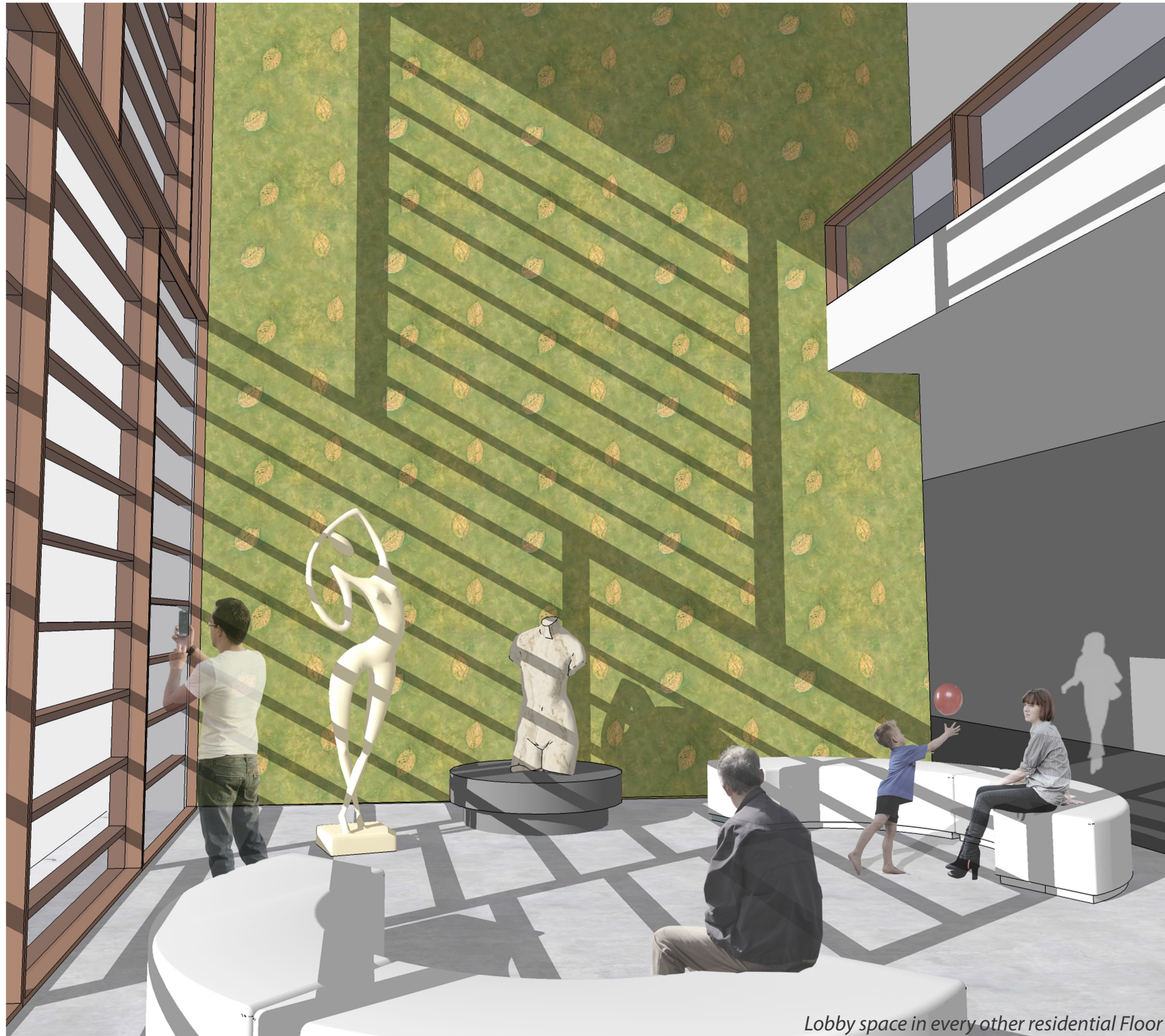


Recreation Space PLAN @ 30m

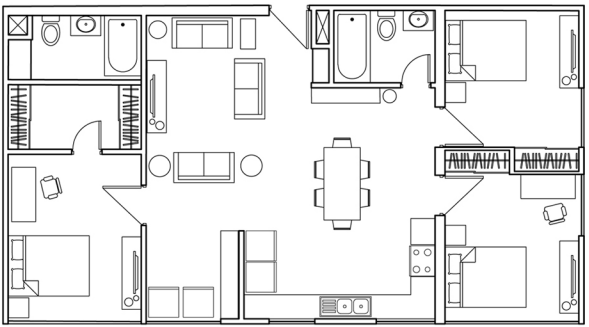


Typical Office PLAN

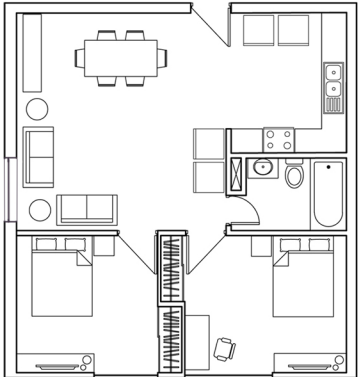




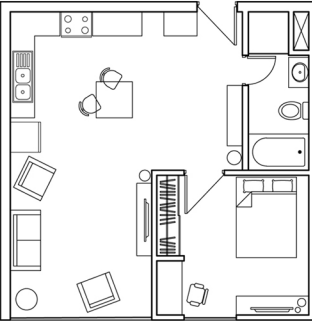
Lobby space in every other residential Floor



3 Bed Room Apartment, 118 sqm



2 Bed Room Apartment, 85 sqm



1 Bed Room Apartment, 66 sqm



Typical Residential PLAN



# Model Study

