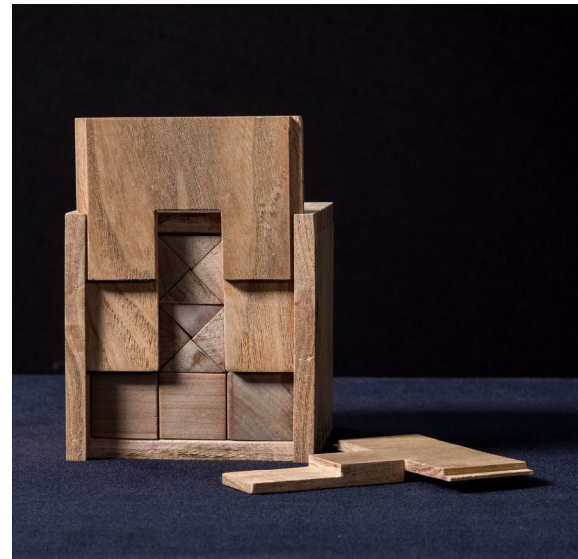


WESTCOTT

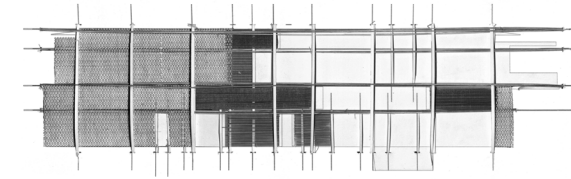
VISITOR CENTER FOR THE WESTCOTT HOUSE

The Westcott Center for architecture and design is located on the site of Frank Lloyd Wright's Westcott House in Springfield, Ohio. In collaboration with Bohlin Cywinski Jackson—who completed the initial schematic design—and the Westcott Foundation, we advanced the project with an emphasis on creating an experiential building envelope, focusing on the design of the facade. Building in the context of Wright challenged us to implement Wrightian design codes or DNA while avoiding specific references to his style. The studio began by building Froebel Gift sets three through six, mallets, and nature-inspired joinery to understand our own intimate experiences with a materially-based tectonic. The design process continued with paper weaving, followed by low relief studies to help us develop the facade as a woven composition. The final design combines Gottfried Semper's four elements and the interwoven curtain wall to create an experiential facade that facilitates the transition from inside to outside, humankind to nature.

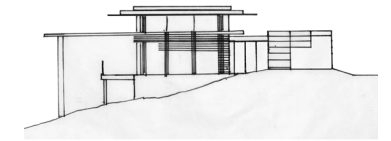


FROEBEL GIFT SET FIVE

INITIAL STUDIES | LINE DRAWINGS AND PAPER WEAVING



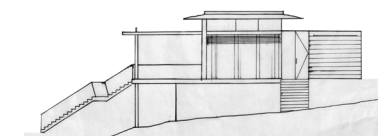
WEST ELEVATION



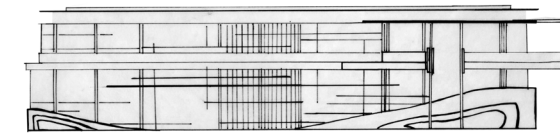
SOUTH ELEVATION



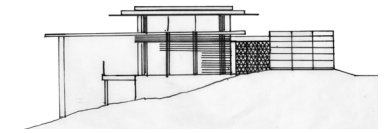
WEST ELEVATION



SOUTH ELEVATION



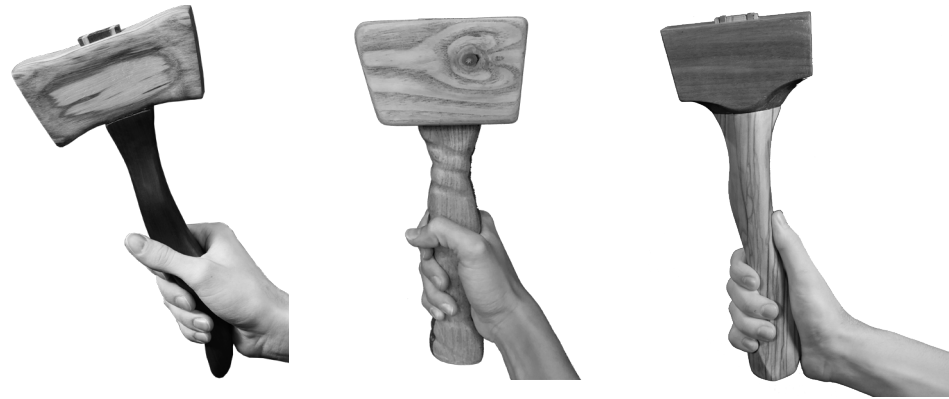
WEST ELEVATION



SOUTH ELEVATION

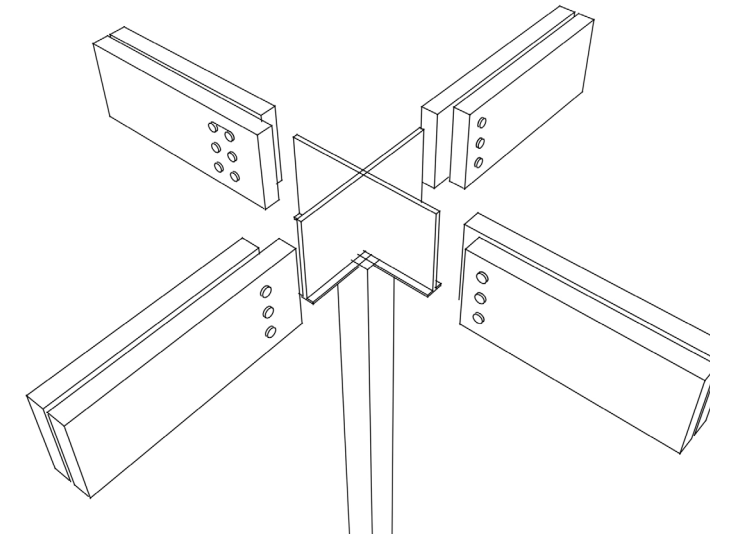


Part of the Westcott studio process involved hand crafting mallets specific to their user. These mallets allowed us to explore our own intimate experience with materials, and understand how their tactility contributes to architecture.

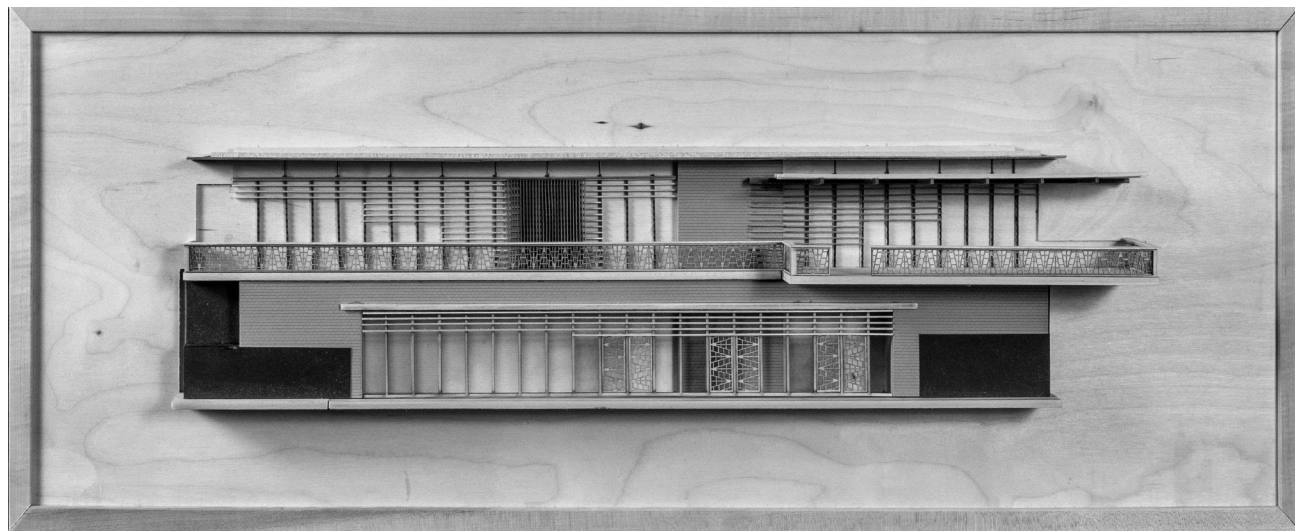


“Hearth”

Gottfried Semper’s *The Four Elements of Architecture* has profoundly affected the outcome of this project. Our building starts with the “symbolic hearth.” This strong vertical element, set among a plethora of horizontals, appears to extend from the mounded earth which the building is set into. The “hearth” provides the focus of the building from which the roof and facade spring. The facades themselves should be viewed as a tapestry with the layers of the facade weaving back and forth between the mullions and stone.



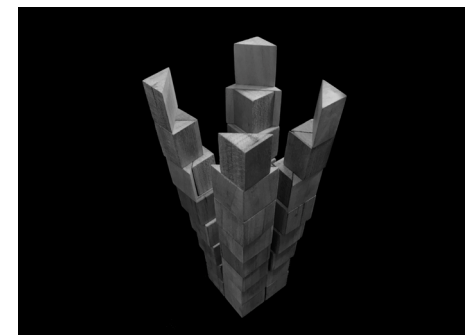
INTERIOR JOINT



WEST FACADE | LOW RELIEF STUDY



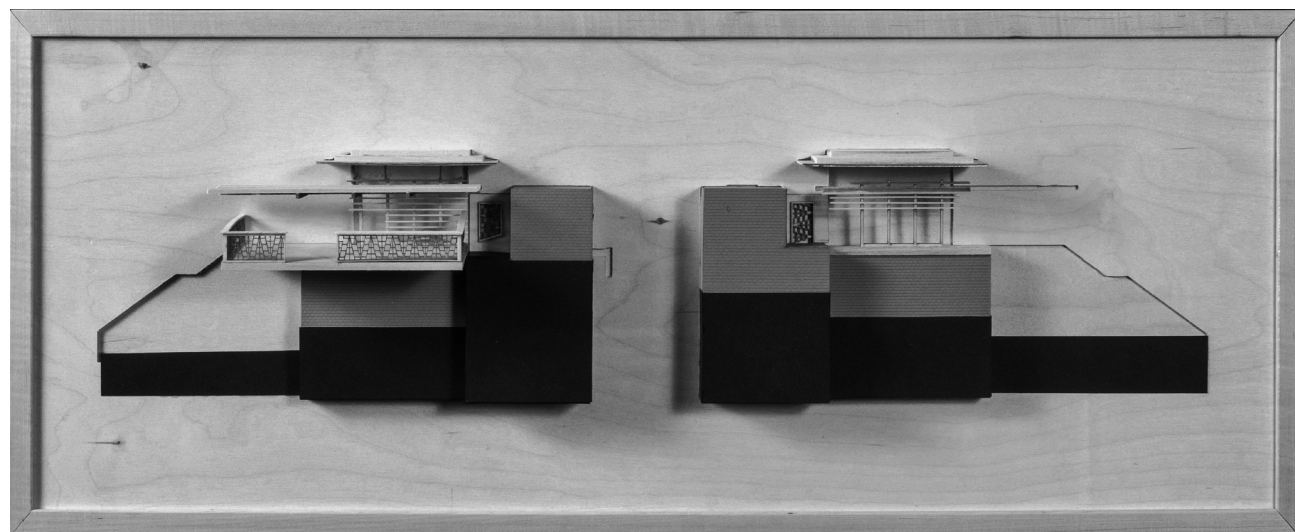
NATURE PHOTOGRAPHY



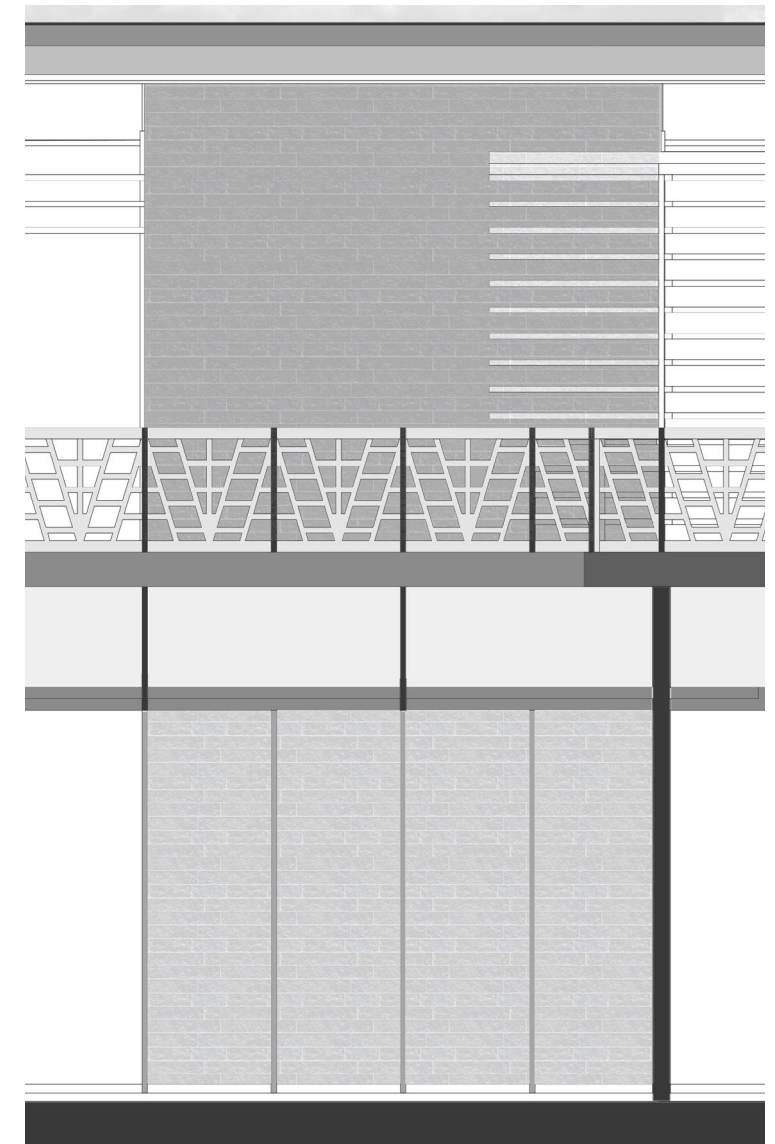
FROEBEL REPRESENTATION



ARCHITECTURAL PRESENTATION



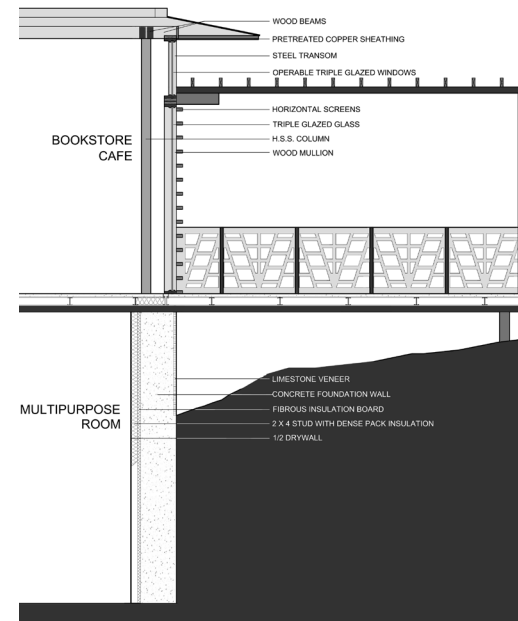
SOUTH FACADE | NORTH FACADE | LOW RELIEF STUDY



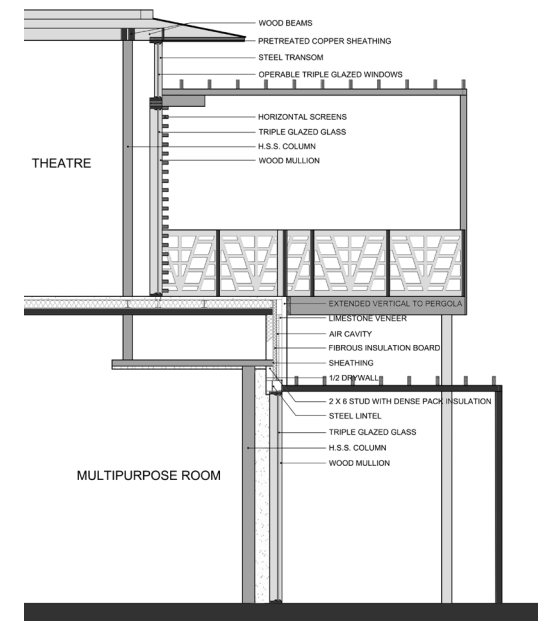
ELEVATION OF “HEARTH”



MODEL - VIEW OF WEST BALCONY



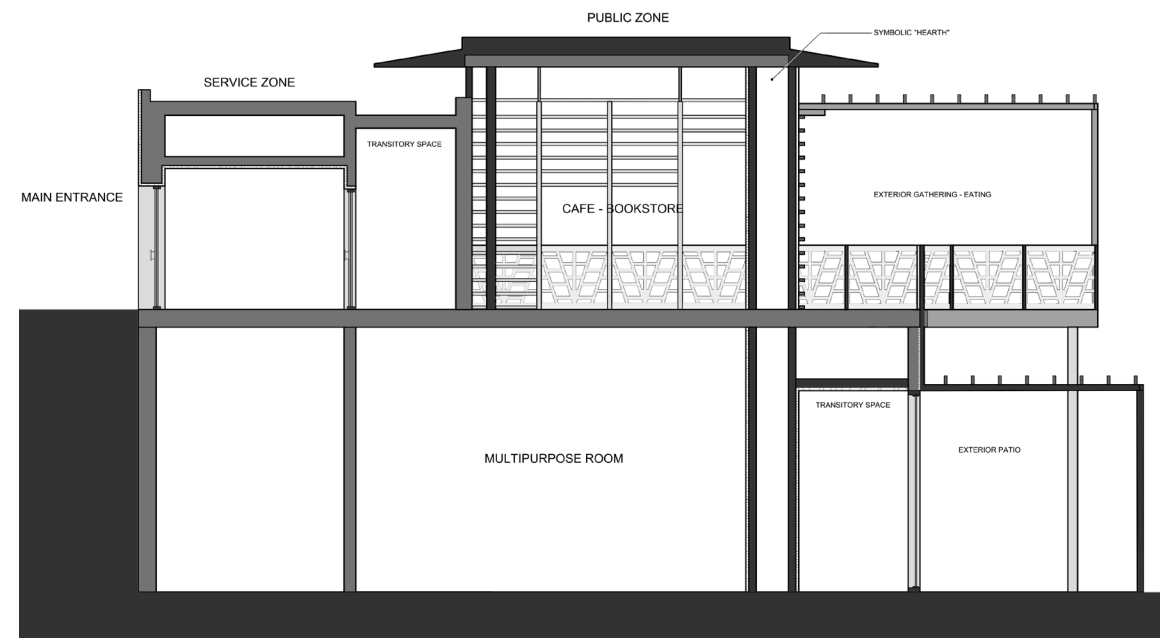
SOUTH WALL SECTION



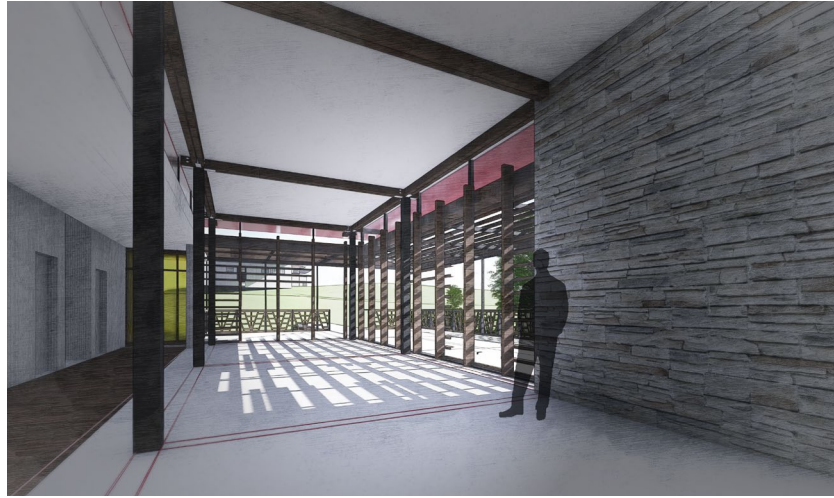
WEST WALL SECTION



MODEL - VIEW FROM NORTHWEST



EAST - WEST BUILDING SECTION



INTERIOR PERSPECTIVE



PLAN

The Westcott Visitors Center is a place where guests are prepared to experience a Frank Lloyd Wright house. We accomplished this by focusing on Wright's main design principle: giving inhabitants of the built environment an intimate connection to nature.



WEST PERSPECTIVE