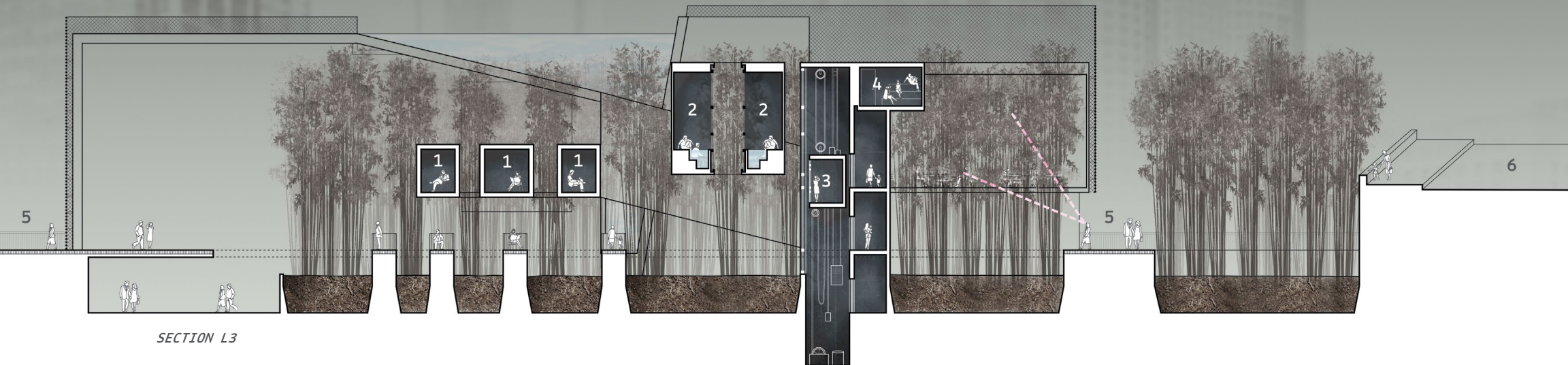
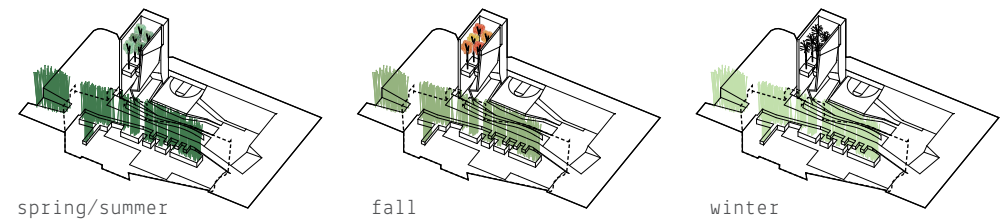


- 1 reading rooms
- 2 soaking pool
- 3 elevator
- 4 sauna
- 5 harborwalk
- 6 seaport blvd bridge



SECTION L3

A layer of bamboo stalks are inserted between the main building and the surrounding landscape, filtering visual reading of activity on the building's Seaport-facing edge. Program legibility varies as the bamboo's porosity shifts with seasonal cycles. Birch trees contained within the 'tree case' signal the current seasonal phase from afar with their color-changing leaves.



PLANT VARIATION