

COLUMBUS METROPOLITAN LIBRARY

# WHITEHALL BRANCH

2015 | WHITEHALL, OHIO

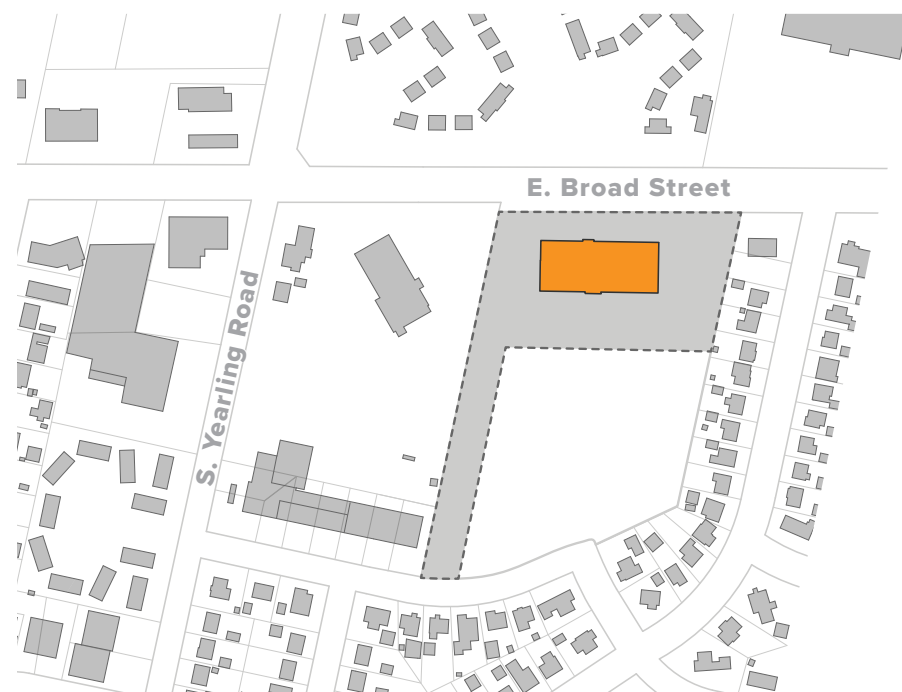
Envisioned as a library for a new generation—as much community center and tech portal as a place to discover books—the new Whitehall Branch of the Columbus Metropolitan Library system goes beyond the traditional role as a repository of books and hard-published resources. Rather, it stands to serve as a vital source for lifelong learning within the surrounding area.

The project's simple design goals—that the building should be **inviting, accessible, transparent, open and flexible**—have fostered a coherency where building access, functions and wayfinding are simultaneously evident throughout.

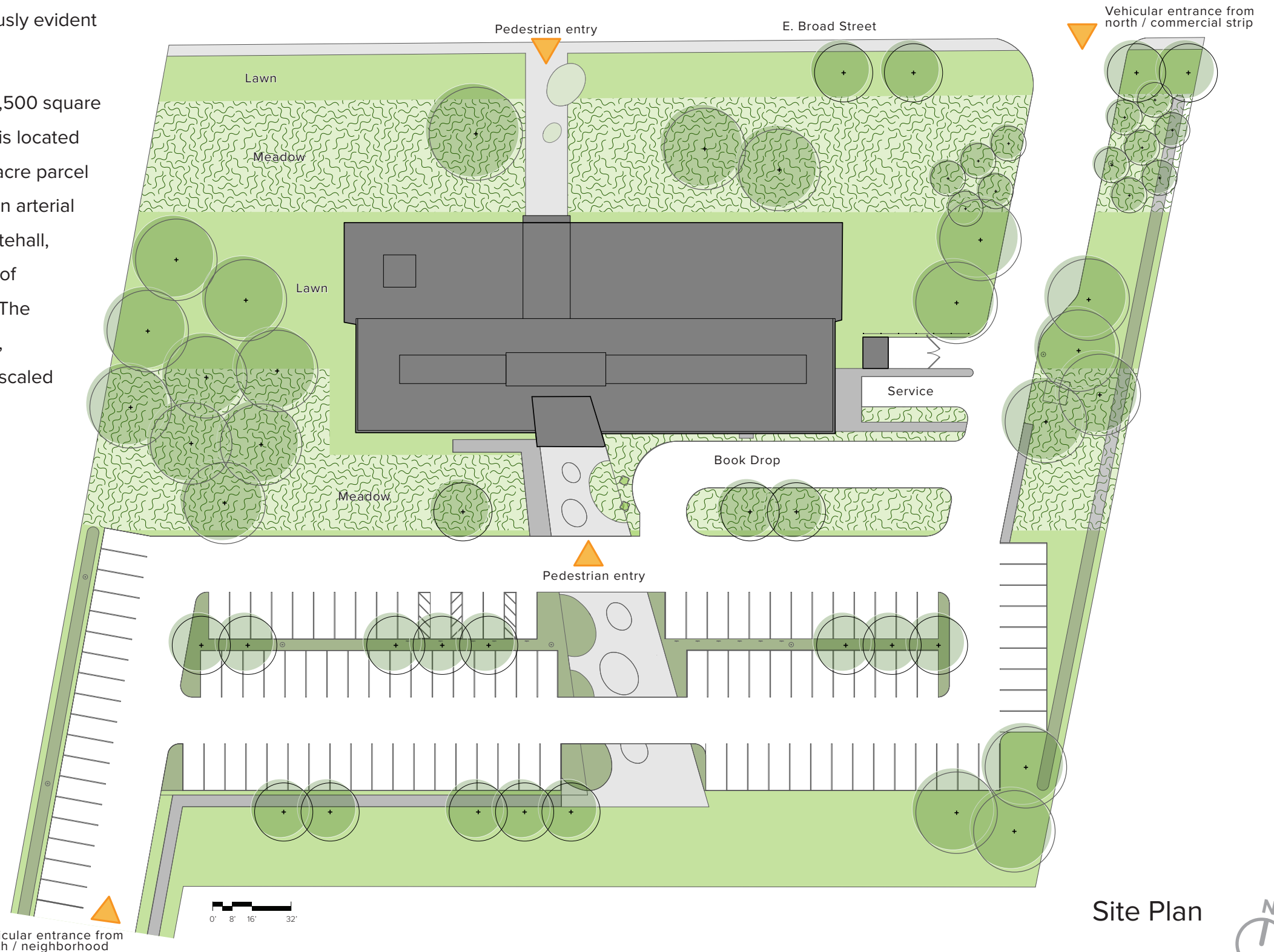
The new 19,500 square foot library is located on a three acre parcel along a main arterial road in Whitehall, an enclave of Columbus. The single story, pedestrian-scaled

structure is sited along the main thoroughfare to the north. The gentle bow-shape of the building responds to the linear site and emphasizes the centered entries. The exterior facades

are composed of flat, metal panels and glass storefront with greater transparency at the public spaces to the north and less so at the staff spaces and meeting rooms facing south.



Context Map



Site Plan

