

Additionally, customized thermal control layers set to city's climate, allowed us to limit the amount of external energy usage being utilized or produced from the building.

This element is key to our construction and overall design as it uses external energy, enabling us to reduce the overall energy loads of the building. With the integration of this component however, there remains be a large upfront cost. However, this will be taken on by our acting developer University, so longterm they will reap the rewards form the investment.

Overall, our design aims to reduce the appearance of corners-meaning there are less intricate details via a fewer variety of materials. This ultimately makes it easier for the bulk ordering of construction materials, while also minimizing costs. Although this may call for the assumption that there would be minimal labor required for the construction of LoHi, there still will be a higher precision for detail throughout assembly.

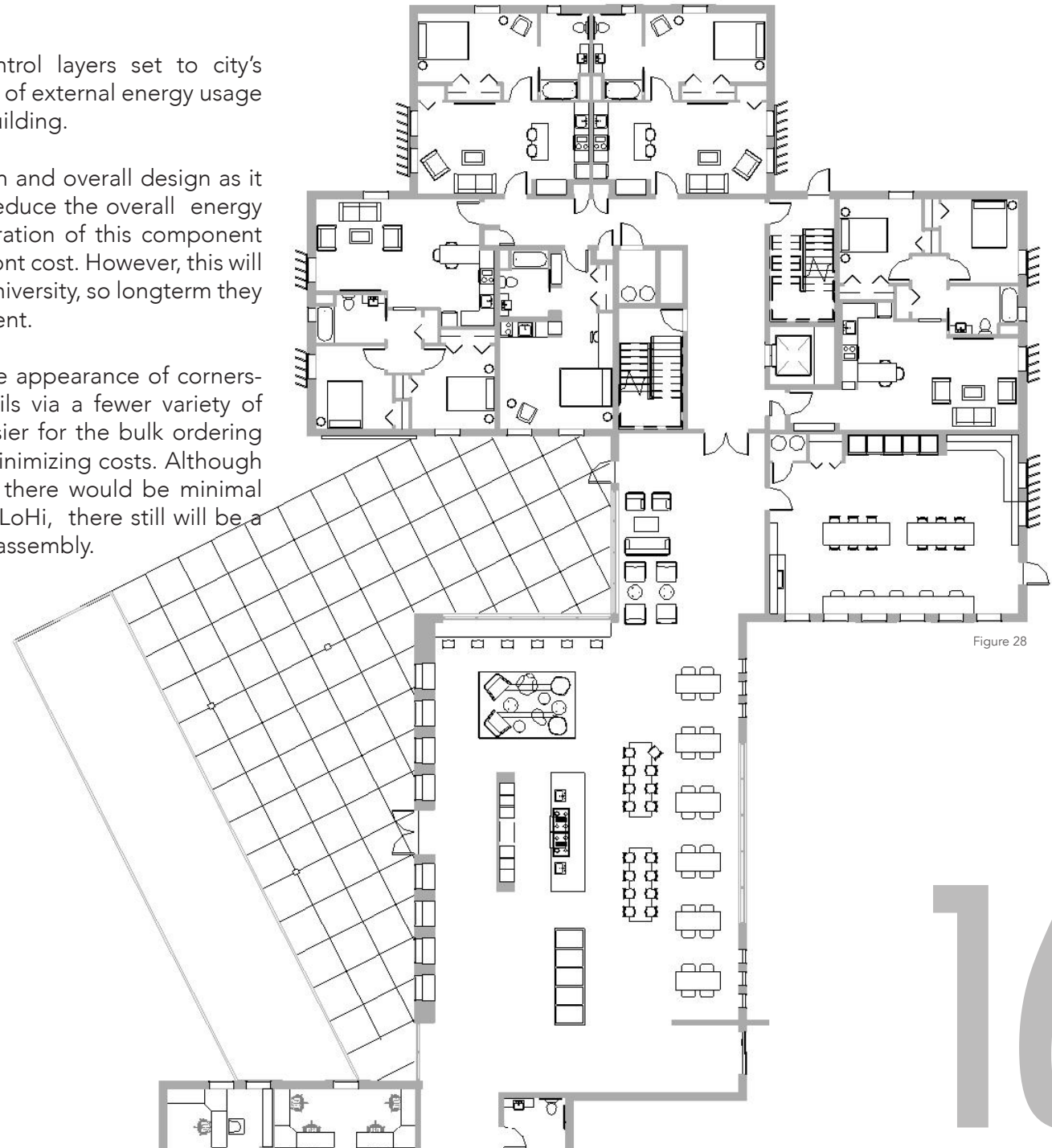


Figure 28