

INTERIOR DESIGN



Figure 16

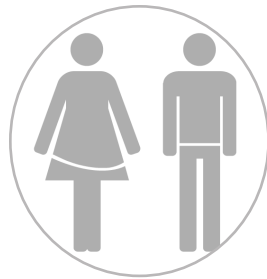
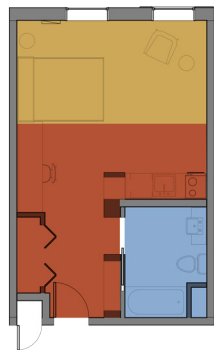


Figure 18



Figure 20



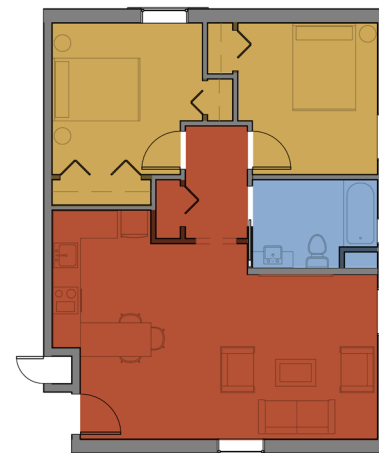
Studio Unit
400 sq. ft

Figure 17



1-Bedroom Unit
600 sq. ft

Figure 19



2-Bedroom Unit
800 sq. ft

Figure 21

With a social and climatic entry point identified, we lead our residents through our structure to their designated unit spaces arranged along either our North or South Towers. Thus, residents are contently protected from the lively nature of the central community spaces and the outdoor corridor. But still within a close enough proximity that they may be enticed enough to engage in the festivities with their peers.

LoHi features three different unit layouts centered around the principles of sustainability. Built-in furniture complete each unit including built-in wall-mounted shelves, closet, and wall-mounted working surfaces. Our studio unit also features a built-in Murphy bed.

Our one bedroom units, which amounts to 20 of LoHi's 38-unit complex, was designed with the notion and intent of Universal/Aging Design in mind. Our team chose to spearhead this concept to cater to more unconventional student families; such as those where students may have a young child or even an elder as their dependent.